

Stay Safe  Stay Apart



# Back to School Travel

- Travelling back to school or college this September will be different
- Buses, trains and trams are running but capacity has been reduced to support social distancing

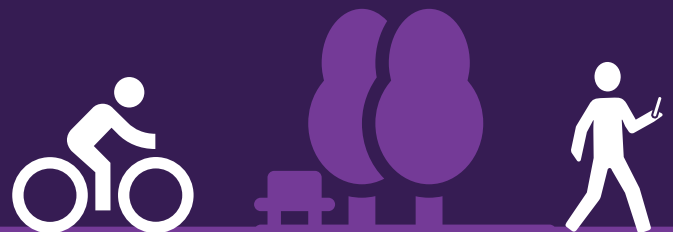


- Services may be busier so plan ahead and allow more time for your journey

- Face coverings must be worn by anyone over 11 years old, except those who are exempt



- Consider cycling or walking to allow more space for those who have no other option or are travelling further



**When travelling, be kind, be patient and stay safe.**

**We are doing everything we can to keep you moving.**

For updates and more information on Back to School Travel, visit our dedicated web page:  
[wmnetwork.co.uk/schooltravel](http://wmnetwork.co.uk/schooltravel)

