

Hub News



Blue Coat

Church of England School
& Music College

Edition 4:
Summer 1 2022

Inspire Education Trust
Together we achieve, individually we grow

MR PHIPPS SAYS...

As Summer moves on, it is the time of year where our older students begin sitting exams and looking forward to their futures. Exams have been running for our Year 10s (who sit English Language GCSE this year), Year 11s, and members of the Sixth Form. Many students are in the process of securing their next steps in terms of education provider, and have so many stories of success to share. In this edition of Hub News, which focuses on the work of the Inclusion Department, you will read some of these stories of lives transformed and progress being made by our students. So many of our students overcome personal challenges to reach their potential and we are proud of them all.



A WORD FROM MRS RAM—SENDCo



In the HUB this term we have continued to be so proud of how our young people engage in the interventions we have in place to support their different needs. This has included touch typing, memory and cognitive intervention, maths intervention, speech and language support, fine motor skills, wobbles and worries, life skills through our bespoke PHSE programme, Lego therapy and social and communication skills.

Over this half-term we have also had visits from Mrs Johnson our SEND governor and Mr Boddison who came to see our SEND provision. They both had the opportunity to meet with our amazing students and were really impressed with the discussions which took place.

MEET THE STAFF

Here are a few more of the staff who work in the Hub.



Miss McGrath is our Thrive practitioner and work with students who have difficulties with their social, emotional and mental health (SEMH). As our Thrive practitioner, Miss McGrath helps students regulate, refocus and reach their potential.

Mrs Powell is one of only a couple of Dyslexia Assessors in Coventry so we are privileged that she still works with us, despite having officially retired! Mrs Powell is not only an expert in her field, but a huge advocate for students who have dyslexia and reading difficulties.



Miss Kirupakaran is a new colleague who has settled in brilliantly this year. She works with students who need support with their literacy and reading. A recent university graduate, she also is a former Blue Coat student—so she knows what it is like!

Other Agencies work with us in the Hub. On any given day there may be specialists from the following agencies in the Hub: The Complex Communication Team; Social Emotional Mental Health and Learning Team; School Counsellor; School Nurse; Educational Psychologists; Inclusion Support workers; and many more!

To contact any member of staff in the Hub please email directly (if you know their email address) or email send@bluecoatschool.com.

SEND REVIEWS

As part of our commitment to continually improving support for our students, we have undertaken work with a number of external consultants and SEND experts.

We are really proud of the feedback we have received from our two most recent external reviews. Here are some of the comments we were given in the feedback.

'The school's vision for SEND is clear'

'Provision mapping for pupils who have SEND is robust'

'The SENDCo has a strong strategic oversight of provision, quality and impact'

'...an approach to inclusion that works for all pupils and that reflects the Christian ethos and values of the school'

'Feedback [is] both listened to and acted upon'

'Leaders are aware of where to target their resources'

'Staff benefit from appropriately regular SEND training'

'Annotated seating plans demonstrate that the use of pupil passports is proactive'

'Parents/carers speak highly of their relationship with the Lead SENDCo and with the school more broadly'

'Pupils with SEND are positive about the support they receive at school'

'The LSA team is a strength'

'The Hub team have the necessary expertise...to support pupils well'

'Pupils with SEND have support when they need it, but also the opportunity to develop independence when appropriate'

EAL and SEND approaches are strategically aligned'

'Pupils...overwhelmingly agreed that they value and enjoy the support they receive'

'There is a positive and growing culture of inclusion in the school...in response to the strategic focus on SEND from the leadership team'

'The curriculum is ambitious for pupils who have SEND'

NEXT STEPS

SEND Reviews are really helpful as they provide a snapshot into what progress is being made, and what the next steps are. These next steps and recommendations form part of the Inclusion Development Plan for next year.

Actions include: * Developing a reading programme to support the lowest attaining readers; * Personalising the Passport strategies within Departments; * Analysing data according to specific needs; * Adding information to the website and Information Report regarding how the school meets various needs.

WONDERFUL WORK!

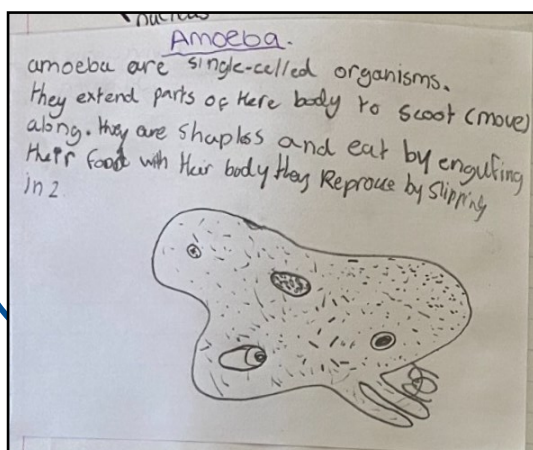
We have been celebrating our students' efforts in their work with them.

These extracts were written by students in their literacy interventions and we are really impressed with their focus and efforts.

I was driving down the road. Tall thin trees loomed over the misty road. Remember what the man said, "never pick up hitch hikers". There's something ahead. What is it? Who is it? I don't know. I could sense that something was wrong. I felt this cold shiver down my spine when a quiet voice whispered, "You should have listened to him".

Gradually, the steam turned into thick smoke and the smoke turned into heavy clouds. The sky grew darker and stretched out for miles with no end. The mountains became solid black, overshadowed by the ominous clouds.

Suddenly, in the corner of my eye, I notice something moving in the distance. It kept getting closer and closer. I stepped forward slowly. I saw it. I knew what it was, a tornado! I shouted, "TURN" to my sister with a fright. I ran into the house before something terrible would happen. I turned off the lights and hid in the corner. I told myself, "everything was going to be OK". Then it hit. I felt it through my spine.....



A Year 8 student worked really hard on this piece of work in Science.

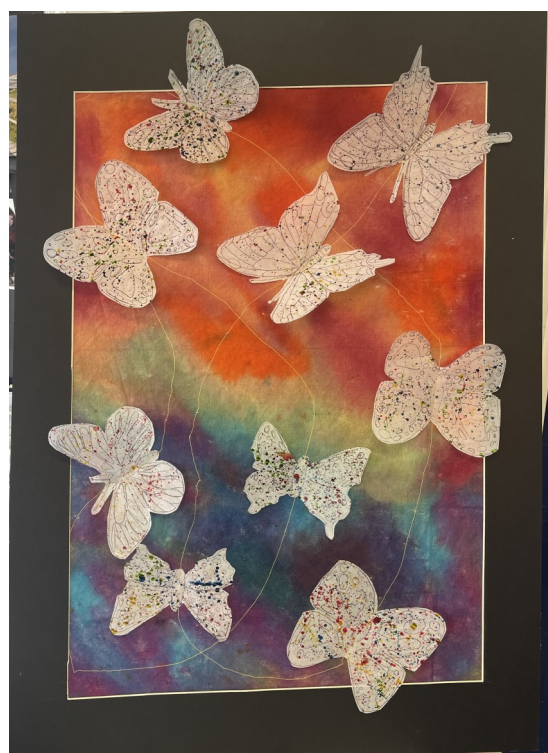
A WELCOMING SCHOOL

One of our fantastic EAL students shared their thoughts with me about their development and experiences here at Blue Coat.

When the student joined our school, they had limited English language skills. The student has made incredible progress both personally, academically, and socially since their arrival. They feel blessed to say that they can now have conversations in English and would like to thank the entire school for all their hard work, guidance, and dedication.

He feels grateful for all the opportunities that they have been given at Blue Coat and is looking forward to studying an ESOL language course at Coventry College in September.

- Miss Ciomag

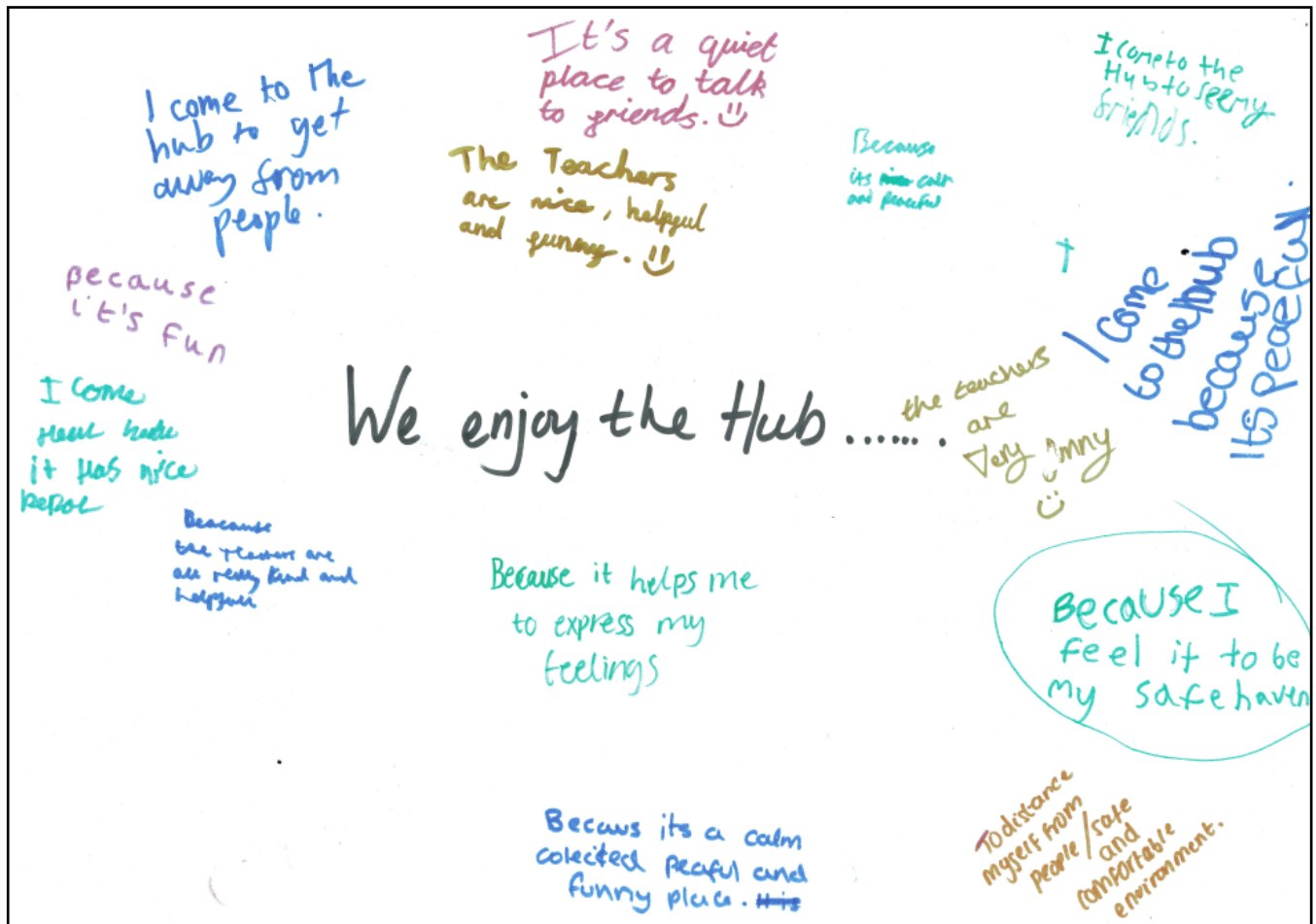


This wonderful piece of artwork has been created by a Year 11 student and we are really proud of her achievements.

WHY WE LOVE THE HUB

Ms Toman asked some of our students why they enjoy coming to the Hub during their social time.

This is what they had to say...



Because it's fun It has nice people

It's a calm...peaceful and funny place

Because the teachers are really kind and helpful

Because it helps me to express my feelings

I feel it to be my safe haven

CAREERS VISIT

We have high aspirations for all of our students. To help our students have a wider range of options in terms of career aims, Mrs Hathaway set up a special careers event between Riverbank School and the Blue Coat Hub. Mr Phipps and Mrs Hathaway took a minibus of Year 10s and Year 11s to hear a range of talks from providers such as Nuneaton Signs, HS2, Severn Trent and Coventry University.

One of the students said 'It was really good to think about careers I had never thought of. I liked hearing about the apprenticeships, where you can earn money and get qualifications at the same time!'



RECOGNISING OUR YEAR 11s

We have been recognising the efforts of many of our Year 11s and staff nominated many of them for specific recognition as they started their GCSEs.

Well done in particular to the following Year 11s, who drew special recognition from Hub Staff.

- * Mollie: for working hard all the time
- * Evan: for always looking out for others
- * Grace: for being such a positive person who makes the best of everything!
- * Thomas: for perseverance and motivation
- * Abdulhadi: for kindness and being a great role model
- * Johar: for being polite and working so hard
- * Naomi: for working really hard and never getting negative points
- * Daniel: for being so respectful to staff all the time
- * Cormac: for helping members of our community when they needed help
- * Amey: for having such a big heart and always looking out for other students
- * Ben: for overcoming things he has found difficult and showing what a brilliant person he is
- * Ryan: for his sense of humour, his kind heart and for overcoming all his challenges

All of our Year 11s deserve recognition for their efforts and for all they have done. We will miss them all and wish them the best for their futures.

THE CHAPLAINCY

Lou Peet, the school's full time Chaplain, explains a little bit about how students access the Chaplaincy.

The Chaplaincy is a safe space which is used by a wide range of students to reflect and be still, consider faith, socialise and eat, worship and find caring and uplifting community together.

At break and lunchtimes, I meet with and get to know students individually and in groups through a range of traditional youth work techniques, prayerspace activities and specialist experience in mental health to make every student - whatever their experience or needs - feel safe, valued, and an important and contributing part of the Blue Coat family.



We find there is a large crossover between students who socialise and use the Hub, and the Chaplaincy. Not least because we have nice chairs and pretty lights too!



MRS SHELLEY SAYS... Our recent external SEND reviews have demonstrated how strong the work of the Hub continues to be. Adam Boddison, who has been the chair and on the Board for national SEND organisations, commented that it was a 'privilege' to spend time with staff, students and parents at Blue Coat to hear about their experiences. Whenever I come into the Hub, I am always so impressed with the way that students on supported study complete their work independently or with support; how students on interventions make excellent progress; and the students who are accessing the Hub for social times interact with each other and are so kind. I am so proud of our Year 11s and 13s who often have to overcome their own challenges in order to complete their exams, supported by the staff in the Hub. Well done to all of them.

