



Blue Coat
Church of England School
& Music College

Standards and Expectations
We are
Ready Respectful Responsible

READY to learn Whole School Expectations Uniform



Plain navy knitted jumper or cardigan (round or V-neck); or navy sweatshirt round or V-neck

No PE tops

No hoodies, no logos or other coloured jumpers/sweatshirts/hoodies

Ready Respectful Responsible

READY to learn Whole School Expectations Uniform



WHAT IS ALLOWED, AND WHAT IS NOT?



Length is just right with school logo



Too short, too tight, no logo



Just right



No jeans, leggings,
denim or skin-tight

- ✓ 1 small stud in each ear
- ✓ No other visible piercings
- ✓ No nose piercing
- ✓ No acrylic nails or nail varnish
- ✓ No earbuds/airpods
- ✓ No headphones
- ✓ No gum
- ✓ No energy drinks
- ✓ **Mobile devices will be put away before entering school**

Ready Respectful Responsible

A Raksha Bandhan (or Rahki) is a thread that sisters tie around the wrist of their brothers during the Hindu festival of Raksha Bandhan



The kara is a Sikh bracelet. Typically it is made of steel or iron, but they can also be made of silver or gold.



Many students wear a cross. Necklaces should be kept behind shirts for safety reasons.

READY to learn Whole School Expectations Uniform



Ready Respectful Responsible

READY to learn

Whole School Expectations

Uniform and appearance



- ✓ We wear our hair in a conventional and understated style
- ✓ We do not have extreme hairstyles, unnatural colours or extensive highlights
- ✓ We wear blue or black hair coverings
- ✓ We do not wear Dourags
- ✓ We wear a plain belt with no logo
- ✓ We wear a small black or navy subtle hair clip/bobble or hair band (no logos)
- ✓ We remove our hats and coats when we enter classrooms



What is
your
uniform
like?

Ready Respectful Responsible

READY to learn Attendance and punctuality



- ✓ We all aim for **100%** attendance to school - your tutor will check daily and contact home if you are off school
- ✓ Medical or dental appointments are made before or after school
- ✓ We arrive to school by **8.40am**
- ✓ We are sat in tutor time by **8.45am**
- Staff will record lates, consequences will be set and contact parents made with parents
- You will attend an after school detention for **ANY 5 lates** in a week. Parents will receive a letter
- If you are **10** minutes or more late to lesson, this is classed as truancy and you will receive a C5 detention
- Tutors will discuss your % attendance each week and reward **100%** attendance each week

Ready Respectful Responsible

RESPONSIBLE and RESPECTFUL Whole School Expectations



- ✓ We are proud of our school
- ✓ We keep left when moving around the buildings
- ✓ We move calmly and quietly around our school site as other students have lessons
- ✓ We are polite and respectful to all
- ✓ We show 'No hands on' behaviour
- ✓ We place litter in bins and look after our environment



How do you
behave at
break/lunch?
When moving
to lessons?

Ready Respectful Responsible

RESPONSIBLE and RESPECTFUL Social time Expectations

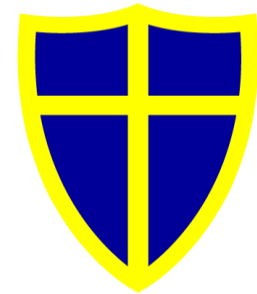
- ✓ We stay in allocated zones at break
- ✓ We are **polite** and **respectful** to all
- ✓ We show 'No hands on ' behaviour
- ✓ We place litter in bins and look after our environment
- ✓ We change in to trainers or Astro boots before going on to Astro –
No shoes
- ✓ We leave our bags in the lockers before going on to Astro
- ✓ We do not eat on Astro or the Tennis Courts
- ✓ We leave Astro /Tennis courts when the whistle is blown
- ✓ We put on our shoes
- ✓ We leave our zone calmly and quickly and go to the next lesson
before the bell rings



How do you
behave at
social time?

Ready Respectful Responsible

Break 1



Year 10 Social Areas

Year 8 Social Areas



1. Reception
2. Hall
3. Sixth Form
4. Library
5. Blue Coat Theatre
6. Sports Hall
7. Music*
8. Gym
9. Welby
10. Gorton
11. Haigh
12. Crossroads/Site Team
13. Technology
14. Bardsley
15. Bottom Playground
16. Astro Turf
17. Tennis Courts
18. Visitors Car Park
19. Main Car Park
20. Garages

**RED AREAS ARE
OUT OF BOUNDS**

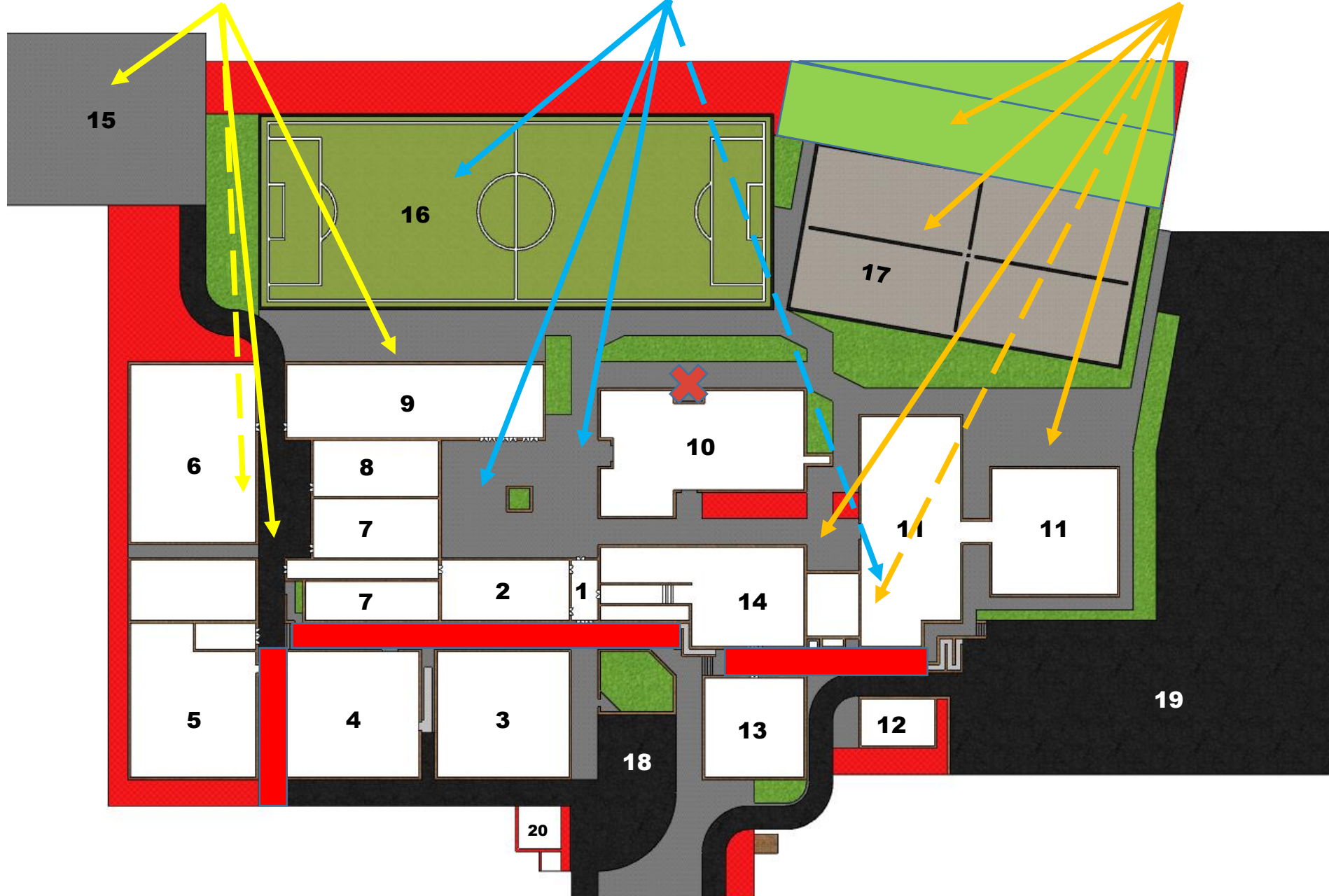
Break 2



Year 11 Social Areas

Year 9 Social Areas

Year 7 Social Areas



1. Reception
2. Hall
3. Sixth Form
4. Library
5. Blue Coat Theatre
6. Sports Hall
7. Music*
8. Gym
9. Welby
10. Gorton
11. Haigh
12. Crossroads/Site Team
13. Technology
14. Bardsley
15. Bottom Playground
16. Astro Turf
17. Tennis Courts
18. Visitors Car Park
19. Main Car Park
20. Garages

**RED AREAS ARE
OUT OF BOUNDS**

Lunch 1



Year 10 Social Areas

Year 8 Social Areas



- 1. Reception
- 2. Hall
- 3. Sixth Form
- 4. Library
- 5. Blue Coat Theatre
- 6. Sports Hall
- 7. Music*
- 8. Gym
- 9. Welby
- 10. Gorton
- 11. Haigh
- 12. Crossroads/Site Team
- 13. Technology
- 14. Bardsley
- 15. Bottom Playground
- 16. Astro Turf
- 17. Tennis Courts
- 18. Visitors Car Park
- 19. Main Car Park
- 20. Garages

**RED AREAS ARE
OUT OF BOUNDS**

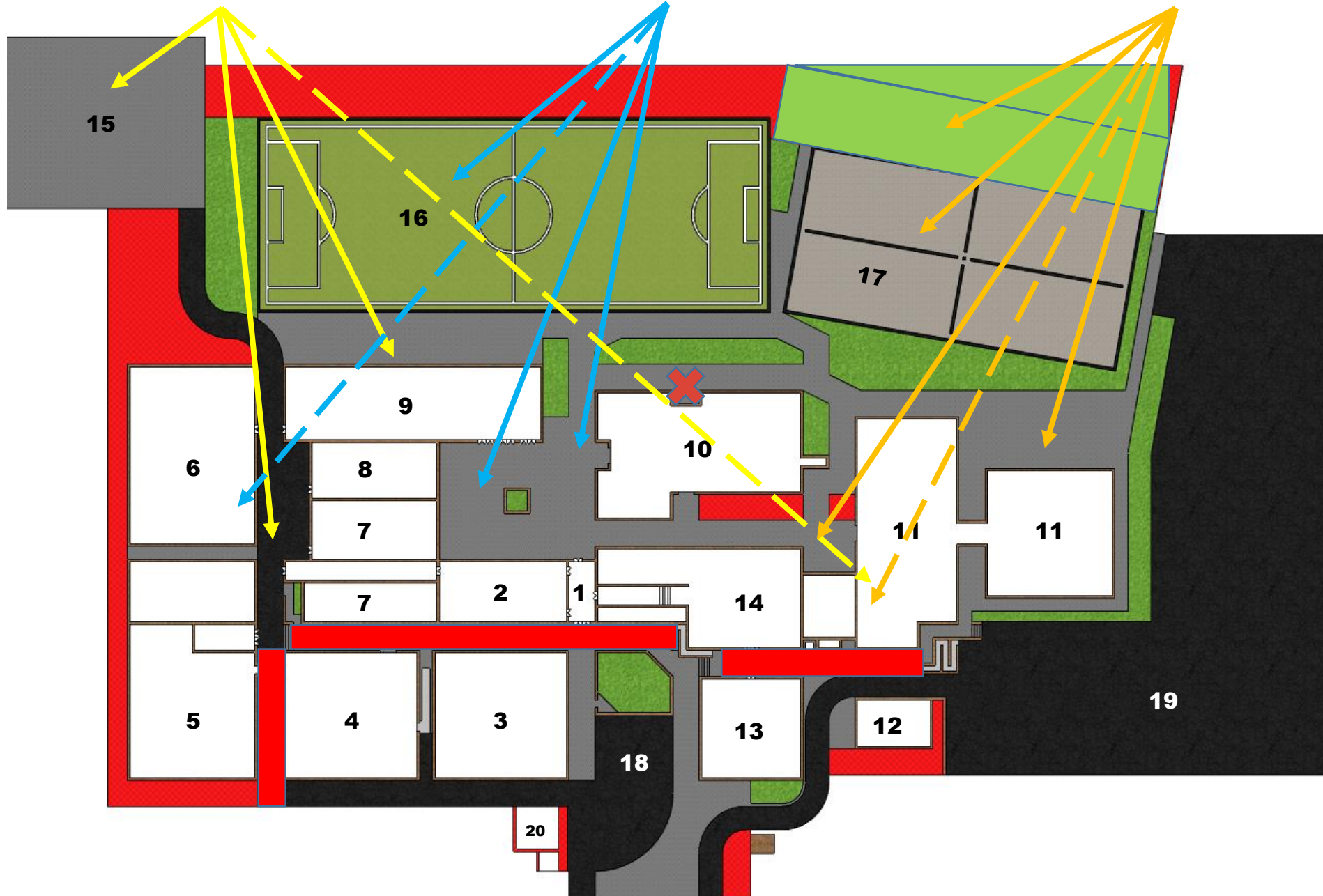
Lunch 2



Year 11 Social Areas

Year 9 Social Areas

Year 7 Social Areas



1. Reception
2. Hall
3. Sixth Form
4. Library
5. Blue Coat Theatre
6. Sports Hall
7. Music*
8. Gym
9. Welby
10. Gorton
11. Haigh
12. Crossroads/Site Team
13. Technology
14. Bardsley
15. Bottom Playground
16. Astro Turf
17. Tennis Courts
18. Visitors Car Park
19. Main Car Park
20. Garages

**RED AREAS ARE
OUT OF BOUNDS**

RESPONSIBLE

Whole School Expectations

Keeping you safe



- ✓ We keep to the one way system in Welby
 - In and Up from the Quad
 - Down and Out opposite the sports hall
- ✓ We Walk on the left in buildings and around site



Are you moving around the site in a safe way?

Ready Respectful Responsible