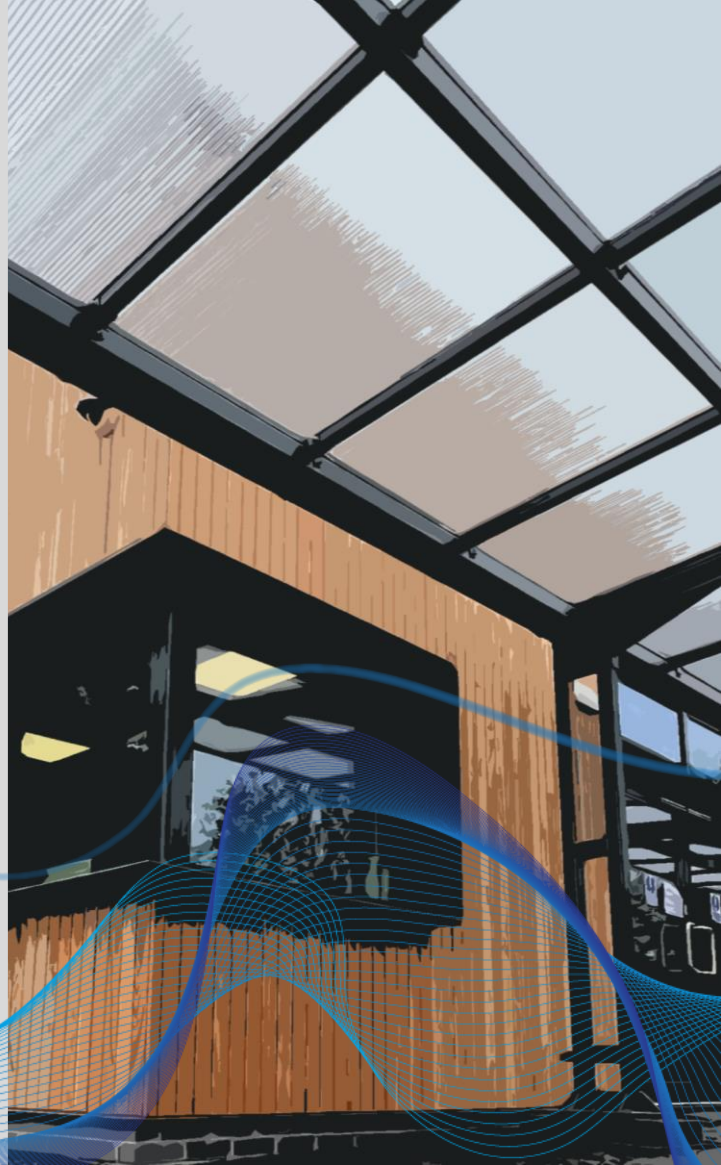




Blue Coat
Church of England School
& Music College

SIXTH FORM 2025-2026
PROSPECTUS



HIGHEST NUMBERED

HIGHEST NUMBERED

HIGHEST NUMBER

O F A * - A

IN THE **CITY**

What does Ofsted say?

SIXTH-FORM STUDENTS RECEIVE AN **OUTSTANDING** EDUCATION!

**STUDENTS
AIM HIGH AND
SUCCESSFULLY
ACHIEVE EXCITING
DESTINATIONS
WHEN THEY LEAVE
SCHOOL.**

**STUDENTS VALUE
THE MANY
OPPORTUNITIES
THEY HAVE
DEVELOP THEIR
LEADERSHIP SKILLS**

**THEY FOLLOW
AMBITIOUS
PROGRAMMES OF
STUDY**

Welcome to Blue Coat



As the Headteacher of Blue Coat School, I am delighted to welcome you to our vibrant and high-achieving Sixth Form. At Blue Coat, we have the highest expectations for all our students, providing challenge and support to enable all students to achieve within a Christian environment.

Our extensive curriculum offers a wide range of courses, including A Levels and BTECs, ensuring that every learner finds their path to success. Whether you're aiming for top universities, apprenticeships, or employment, we provide the challenge and support you need. In the Sixth Form, you'll have the freedom to choose your own curriculum and destination, embarking on a transformative journey from GCSEs to your next life stage. Our dedicated staff, excellent pastoral support, and emphasis on extra-curricular participation create a nurturing environment where you can flourish academically and personally.

Underpinning everything we do at Blue Coat are our Christian values and our vision to "live life in all its fullness". This means that all people are treated with love and respect as the school serves the students and its community with generosity, humility and integrity. Please do not hesitate to contact the school if you would like more information or a visit.

Join us at Blue Coat and build a bright future.

A handwritten signature in black ink, which appears to read "L Henden". The signature is written in a cursive style.

Mrs L Henden – Headteacher

Introduction



Blue Coat Sixth Form is a wonderfully talented, diverse and welcoming environment. Seeing how capable some of our students are can be quite humbling, be it with the quality of artwork on display at an exhibition or seeing the level of calculus being solved in the common room.

The quality of provision in the Sixth Form is outstanding (Ofsted 2023) and we work hard to ensure the best possible opportunities for you. We have a strong focus on academic work, but also seek to develop you in other ways. Throughout this prospectus you will see the range of opportunities and possibilities open to you.

Sixth Form is about helping students develop into young adults ready for the next life stage. This is our central purpose. For the first time you get to choose your own curriculum and destination. In the short space of two years, a journey takes place from GCSEs to going to university, the workplace or an apprenticeship.

The staff are also amazing and it's a privilege to work alongside the Sixth Form team. The pastoral support is first rate and there is always someone on hand to help you when needed.

The sense of worship is central to the spiritual life of the Sixth Form. We meet together for communions on a termly basis, where students of all faiths are able to stand together in a collective act of worship, partaking as they feel fit.

Whether you've got a chosen career in mind or still have no idea, Blue Coat is a place where you can build on your existing skills, learn new ones and prepare for adult life in many different ways.

We look forward to meeting you.

A handwritten signature in black ink that reads "J. Davoile". The signature is written in a cursive, flowing style.

Miss J Davoile - Head of Sixth Form

Destinations

When considering Sixth Form you must also consider where you might go afterwards. Students often change their mind and new possibilities appear as well.

Universities

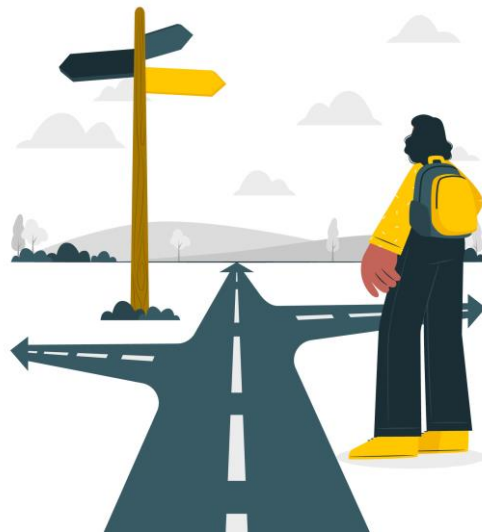
The most common destination is university and there is an extensive programme of activities and trips throughout the two years, designed to ensure that students make a good choice. All UK university applications are made through the online system found at www.ucas.com.

The staff work hard to ensure that this process is understood by the pupils and made as smooth as possible. Early applications are encouraged, and students start to receive offers in mid-October, months in advance of the January application deadline.

Travelling, Getting a job or Starting a Business

All of these and many more have been undertaken by Blue Coat leavers. We have a dedicated careers advisor who can offer excellent impartial advice.

The website www.notgoingtouni.co.uk contains further suggestions as well.



Blue Coat Theatre

Blue Coat Theatre is a 250-tiered seat venue fully equipped with professional lighting, sound and audio-visual facilities supported by a full time Theatre Technician. Other Facilities include a traditional black box studio for smaller scale performances and a main hall.

The Theatre has a beautiful brick interior, wooden floors and can transform into a traverse arena with an additional 200 seats. As well as performing, students are encouraged to get involved backstage. We have a large selection of props and a costume department with hundreds of different outfits from period drama to modern day.

Since opening in 2009 our audiences have enjoyed a wide-ranging repertoire, from large scale musicals such as *We Will Rock You* and *The Sound of Music* to *Shakespeare*, *Chaucer* and more contemporary plays such as *Abigail's Party*, *Lord of the Flies* and *Waiting for Godot*.

The Music department also host many events throughout the year that showcase the Choir, Jazz Band, Wind Band and Gospel Choir.

Students have the opportunity to work with professional theatre companies, our past collaborations have been with the *Belgrade Theatre*, *Gecko Physical Theatre Company*, *The Royal Shakespeare Company*, *The Albany Theatre* and *Coventry City of Culture 2021*.

The school recently took a performance of *One Good Soul* featuring a cast of sixth formers to the Edinburgh Fringe Festival which received excellent reviews. In addition to this students have the opportunity to take part in a exchange project which results in a performance with Colaiste Choilm School in Ireland.

Blue Coat Theatre is also popular within the local community allowing local clubs and organisations to hire the space throughout the year.



Blue Coat Alumni



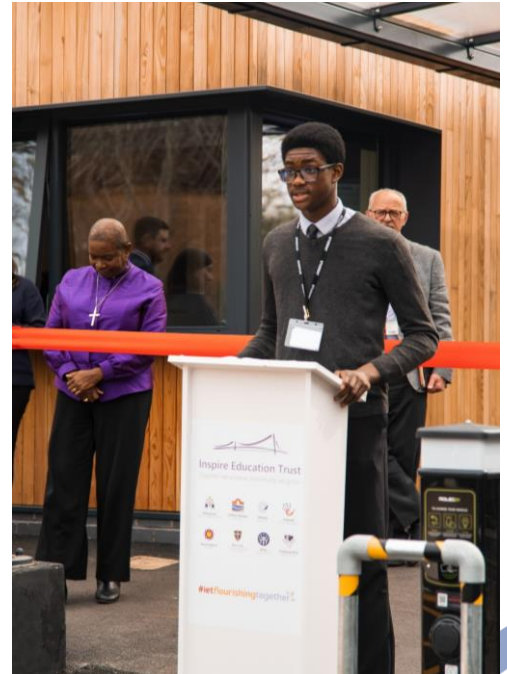
Samuel Akuneme

For the last two years, I have had the privilege of being a Blue Coat Sixth Form student, serving as the elected Head Boy for 2023/24, and studying Business, Politics, and Economics for my A-Levels. I managed to achieve the grades I was hoping for and secured my firm university choice, Durham University, to study Business and Management.

Throughout this two-year rollercoaster journey, I have created many great memories, from meeting new friends and participating in events to my time as Head Boy. Nathan Hart, the second Head Boy alongside me, and I were given the reins to host weekly leadership team meetings, where we were able to implement ideas and changes that sixth form students wanted to see, including charity events, new clubs and societies, and student-led assemblies.

I also received a great deal of support from my teachers, which made my sixth form experience much easier. From after-school intervention classes for my subjects to guidance on my personal statement and university choices, this sixth form made me feel confident throughout my time here, knowing that plenty of support was available to me.

Thank you for everything, Blue Coat!



Blue Coat Alumni



Anehita Okonofua

My favourite thing about Blue Coat Sixth Form is the genuine care teachers have for each of their students, shown by the effort they put in to help us succeed. This was essential for me, as the process of gaining a place at medical school was not plain sailing. It took the collaboration of multiple staff members journeying alongside me, who not only helped practically with writing my personal statement and preparing for interviews, but also offered words of encouragement to keep my morale high on days when I felt I wouldn't make it.

The Sixth Form team cared holistically about my wellbeing and altered my timetable on multiple occasions to accommodate my requests. Regular after-school sessions, along with occasional holiday interventions run by teachers dedicating their own time, ensured I achieved the grades for my conditional offer.

I'm about to begin my first year of medicine at the University of Liverpool – a real miracle! I feel ready to embrace this new challenge thanks to the strong academic and character foundation I gained during my time at Blue Coat.



Elliot Barker

Pursuing law as an academic study can be immensely rewarding, but by no means easy. When applying, you are required to demonstrate your interest in the subject and a willingness to delve into a whole new field of academia.

Blue Coat Sixth Form was excellent at assisting me throughout my entire application process. From my personal statement to my interviews and everything in between, the staff provided support that was second to none! As an early applicant, my process was different to most, nevertheless Blue Coat was there to ensure I was well-equipped to deal with the many challenges I faced.

I'm glad to say I am now a first-year student at St John's College, University of Cambridge. It was my dream university and Blue Coat Sixth Form were instrumental in getting me there!

Sixth Form Student Council & Enrichment

Sixth Form Student Council

The Sixth Form Council is an integral part of the life and working of the Sixth Form and the wider community of Blue Coat School.

We meet regularly to discuss matters concerning students as well as discussing Sixth Form policy.

Debates can be lively, but an underlying respect and courtesy always remains and ensures that we can be an effective body.

One of the most important parts of the council is its charity work which has included fundraising, shows, quiz nights and other exciting events in order to ensure we are fulfilling the values of our school.

Seeing changes within the school due to our Sixth Form Council is very encouraging and it is great to see our school develop to make student experiences more enjoyable.

Enrichment

Completing enrichment activities helps you to become a well rounded adult. Being at school teaches us more than just our subject exam curriculum, and enrichment helps to build on this wider learning.

Universities, apprenticeship providers and employers look for students who have gone above and beyond during their time at sixth form, taking part in a variety of different activities. These activities will give you skills that are transferable into university study and employment.

To support you with gaining these experiences, we have an enrichment programme at Blue Coat which is bespoke to you as an individual.

A few examples of our enrichment offer are:

Basketball Society, Football Society, Blue Coat School Choir, Gospel Choir, Senior Band, MedSoc, Coventry Pathways Hub, Senior Maths Challenge, STEM Society, Christian Union Society, LGBTQ+ Society, Social Justice Society, Law Society...

BTEC or A Level or Both?

VISIT OUR BRAND
NEW HUDSON-
WILKIN SIXTH
FORM BUILDING!

BTEC UPDATES – SEPTEMBER 2025

Please note that the Level 3 qualification landscape is changing and undergoing major reform. What this means for us is that the BTEC offer could change for September 2025 as we await further government updates.

What are BTECs?

BTEC qualifications are equivalent in value to A Levels when it comes to university entrance points (UCAS points) They are accepted by the vast majority of universities for some courses, but it is worth checking on the UCAS website in the entry criteria section. These qualifications are mostly coursework based but there are some exams. Students complete tasks within each unit and there is ongoing assessment and feedback. BTECs are graded Pass, Merit, Distinction and Distinction Star.

Which should I do?

For some students the choice is obvious; traditional subjects at traditional universities require traditional A Levels. For others, the ability to study Sport full time is the clear choice. One route is not harder than the other, but there are different skills needed. Organisation is essential in both qualifications, but the ability to manage a well ordered file in BTEC is essential.

It is possible to study a mixture of both types of qualification.



How to Apply

The application process is simple, please complete the Microsoft form and submit - you can find this on the school website under sixth form and on the open evening PowerPoint.

www.bluecoatschool.com/

It is very important you select the right qualification and subject. Think through your choices very carefully, talk to your tutor, teachers and parents.

Once you have completed the application form, we will contact you in January/February to discuss choices and options to ensure you are making a good decision in the subjects you have chosen. We will send condition offers based on GCSE grades, and the entry criteria given on the subject pages in this document.

To Study A levels and BTEC's you will need a minimum of five grade 5-9s including English and Maths.

Please note some subjects require specific GCSE grades including the standard entry requirement.

Subject Choices

When considering the subjects to take you need to ask yourself these questions:

- 1) What do I enjoy?
- 2) What am I good at?
- 3) Where does this get me?
- 4) Have I chosen a manageable workload?

If you don't enjoy a subject, do you really want to be doing it for five taught hours a week for the next two years, plus homework and revision?

Choose subjects which you are good at and have had positive feedback from teachers. This may sound obvious, but this is still something that needs to be actively considered.

Many courses at university have certain courses they require and others that they like. Often there doesn't seem to be a direct link, for instance History is preferred over A Level Law when applying for a Law degree. One source of good advice which discusses subjects and the links to university choices can be found here:

www.informedchoices.ac.uk

Some subjects are very similar in terms of workload. You need to ask yourself if you have got a manageable mix of exams and coursework in your chosen subjects.

Subject Contents

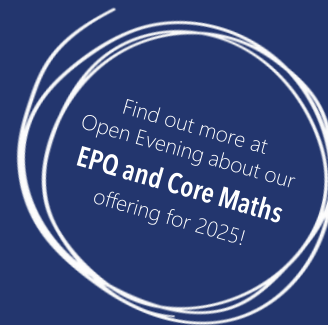
Course content is correct at the time of going to print. We regularly review our course content, to make it relevant and current for the benefit of our students.

Art and Design – Fine Art	13
Biology	14
Business Studies	15
Chemistry	16
Computer Science	17
Economics	18
English Literature	19
English Language and Literature	20
French	21
Geography	22
German	23
Graphics	24
Health and Social Care	25
History	26
Law	27
Mathematics	28
Mathematics and Further Mathematics	29
Media Studies	30
Music	31
Music Technology	32
Performing Arts	33
Photography	35

Philosophy, Ethics and Religion	36
Physical Education	38
Physics	39
Politics	40
Product Design	41
Psychology	42
Sociology	43
Sport	44
Textiles	45

Further subject information can be found on our website

www.bluecoatschool.com



ART & DESIGN – FINE ART

A LEVEL

Course Content

During this 2 year course students will engage in creating a series of work that is personal and original. Students will be guided through the course by the class teacher, but will have a great sense of independence when shaping and developing their visual portfolio. Students will be able to express their own ideas and emotions in many forms using many combinations of process, material, technique and media.

Students will develop skills of critical analysis and interpretation of their own outcomes and the work of others. The aim is to develop a very high standard of practical ability and confidence in talking about core concepts and elements of the visual arts, which will lead to direct entry onto degree courses in the visual arts and related disciplines. Students will have many opportunities to see art from first hand experiences and meet with artists on trips to galleries around the world. Students will develop a folder of work that will be suitable for interview at University or employment.

Further studies and career opportunities:

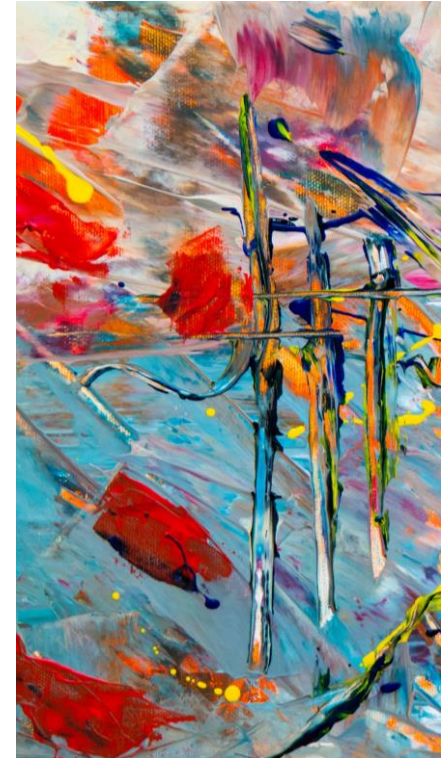
There are numerous career routes in the field of the visual arts. We prepare students to study Fine Art, Illustration, Graphic Design, Fashion, Fashion Marketing, Architecture and all design courses for which drawing is a necessary skill.

Subject Entry Requirements:

Students are expected to have gained a Grade 5 in GCSE Art.

How is this assessed?

- ✓ Exams
- ✓ Coursework
- ✗ Other



Exam Board

Eduqas

BIOLOGY

A LEVEL

Course Content

This course explores Biology as the science of life and focuses on key topics, including: animal and plant physiology, cell biology, genetics, biotechnology and genetic engineering. The aims of the course are to: stimulate interest in Biological Sciences, promote an awareness of the key issues relating to environmental and human biology, develop ability to research topics and then to communicate arguments clearly and logically.

The course is delivered in an interesting, straightforward and practical manner in order to ensure that students are rewarded for the biology skills and knowledge they have developed. Students will complete accessible assessments with various abilities to shine and a choice of two essay questions, giving students more opportunities to bring together knowledge of the whole specification.

Further studies and career opportunities:

Students completing the A Level in Biology have gone on to careers and degree courses in a wide range of fields, including: Biological Sciences, Clinical Sciences, Pharmacy, Dentistry and Biotechnology.

Subject Entry Requirements:

Students are expected to have gained at least a Grade 6 in GCSE Biology or a 6:6 in GCSE Combined Science and a 6 in GCSE Maths

How is this assessed?

- ✓ Exams
- ✗ Coursework
- ✓ Other



Exam Board

AQA

BUSINESS STUDIES

A LEVEL

Course Content

The Edexcel A Level in Business Studies is a fantastic course to give a broad understanding of the Business World, and prepare students for further study or employment in this area. This is an academic course, which is rigorous and not only builds up knowledge of essential business concepts such as Accounting and Finance, Marketing, Human Resources and Operations, but also develops a range of valuable skills. This can include analytical skills, evaluative skills and numeracy skills.

The course covers all business theory but is delivered with a clear focus on applying this knowledge to the real-world business environment, making it an engaging and interesting subject to study. Students will also consider Business Strategy, looking at how business can adapt their strategy to the rapidly changing business environment, and how to manage this change of strategy effectively.

Further studies and career opportunities:

This course covers a vast range of both theoretical and practical business knowledge and understanding. Therefore, is ideal for progression into higher education. It would progress well onto a range of courses including Accounting and Finance, Business Management, Marketing and International Business.

It would also give excellent knowledge and understanding of the business world to students wishing to go into employment or into higher level apprenticeships. Business Studies also works well with a range of other subjects, and complements them effectively, including languages, Economics and Sports.

Subject Entry Requirements:

Students are expected to have achieved the standard entry requirements for A level.



How is this assessed?

- ✓ Exams
- ✗ Coursework
- ✗ Other

Exam Board

Edexcel

CHEMISTRY

A LEVEL

Course Content

This course answers questions such as: Why is copper sulphate blue? Why is water a liquid at room temperature whilst carbon dioxide is a gas? How can we address the problem of our reliance on crude oil?

Throughout the course, students make sense of the different aspects of Chemistry they have studied at GCSE and discover the reasons behind the theories, observations and concepts they have previously encountered.

The course follows on from the Combined Science GCSE course and Chemistry GCSE course. Therefore, some of the topics covered will be familiar to students, while others will be completely new, such as making electrical cells, drug synthesis and analysing chemicals using spectroscopy. This course is exciting and challenging, helping students understand the world around them.

Further studies and career opportunities:

Students completing the A Level in Chemistry have gone on to study Chemistry at university and find that a chemistry qualification is valuable in a range of careers.

Most universities require applicants to have an A Level in Chemistry to study Medicine, Dentistry, Pharmacy, Biochemistry, Veterinary Science, Material Science and Forensic Science. It is also strongly recommended for Geological Sciences, Engineering, Medical Sciences and Environmental Studies.

Subject Entry Requirements:

Students are expected to have gained at least a Grade 7 in Chemistry or 7:7 in GCSE Combined Science, and at least a Grade 6 in Mathematics.



How is this assessed?

- ✓ Exams
- ✗ Coursework
- ✗ Other

Exam Board

AQA

COMPUTER SCIENCE

A LEVEL

Course Content

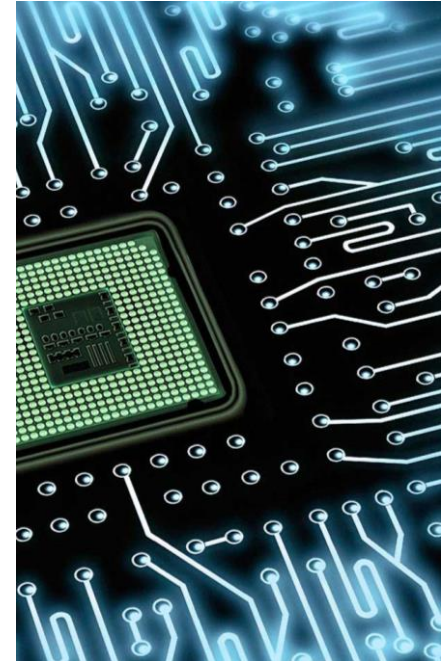
Computer Science is the study of computers, the most important technological advance of our age. You will learn the fundamentals of how computers store, process and display data. You will also learn to code your own applications, and have a chance to develop your own piece of software. The course is best suited to those interested in engineering, logic, and creativity. At the end of the course you'll have a deep understanding of technology and the code skills to enter the world of work or further study. There has never been a more exciting time to study Computer Science, and successful graduates have never been in higher demand.

Further studies and career opportunities:

Students completing the A Level in Computing go on to pursue a range of careers including: Software Engineering, Health Informatics, Security, Video Games, Artificial Intelligence and Medicine, Ethical Hacking. It also equips you with problem solving skills that can be applied to any career.

Subject Entry Requirements:

Students are expected to have achieved the standard requirements for A level, as well as having done GCSE Computer Science before and gaining a minimum grade 5 plus a Grade 6 in Maths.



How is this assessed?

- ✓ Exams
- ✓ Coursework
- × Other

Exam Board

OCR

ECONOMICS

A LEVEL

Course Content

This course allows students to apply economic theory to support analysis of current economic problems and issues. It explores both the national and international economies and how these affect both businesses and individuals. The two main topic areas are micro and macro-economics. The course helps to develop both analytical and quantitative skills. Case-studies are varied and can be taken from the UK, EU or wider global economy.

Throughout the course, a range of learning methods will be used, including: class discussions, group work and independent research. These methods will be used to explore current issues, such as: recession, economic growth, budget deficits and competition.

Further studies and career opportunities:

Students completing the A Level in Economics continue to study economics or business related courses at University. Transferable skills such as critical thinking, problem solving and data handling also assist students in a wide range of careers.

Subject Entry Requirements:

Students are expected to have achieved a Grade 6 in GCSE English or Grade 6 in GCSE Maths.

How is this assessed?

- ✓ Exams
- ✗ Coursework
- ✗ Other



Exam Board

OCR

ENGLISH LITERATURE

A LEVEL

Course Content

This course provides students with the opportunity to read set texts, and others that they have selected for themselves, widely and independently, engaging critically and creatively with a substantial body of texts and ways of responding to them. Students develop and effectively apply their knowledge of literary analysis and evaluation, exploring the contexts of the texts they are reading and others' interpretations of them. Students undertake independent and sustained studies to deepen their appreciation and understanding of English Literature, including its changing traditions.

The purpose of Literature is, in Dryden's happy formulation, 'instruction and delight'. Nearly three hundred years later, no better definition exists.

Further studies and career opportunities:

Students completing the A Level in English Literature have gone on to study many related subjects such as English Literature, Law and Drama at University. The qualification is a broad based platform which can lead to many careers such as Teaching, Law and Journalism.

Subject Entry Requirements:

Students are expected to have gained a Grade 5 in GCSE English Language and a Grade 7 in English Literature.

How is this assessed?

- ✓ Exams
- ✓ Coursework
- ✗ Other



Exam Board

Edexcel

ENGLISH LANGUAGE & LITERATURE

A LEVEL

Course Content

This course provides students with the opportunity to develop and apply their knowledge of literary analysis and evaluation, as well as their understanding of the concepts and methods appropriate for the analysis and study of language. Students use linguistic and literary approaches in their reading and interpretation of texts, showing how the two disciplines can relate to each other, engaging creatively and critically with a wide range of texts.

Throughout the course, students explore the ways in which texts relate to each other and the contexts in which they are produced and received. They develop their skills as producers and interpreters of language, undertaking independent and sustained studies.

Further studies and career opportunities:

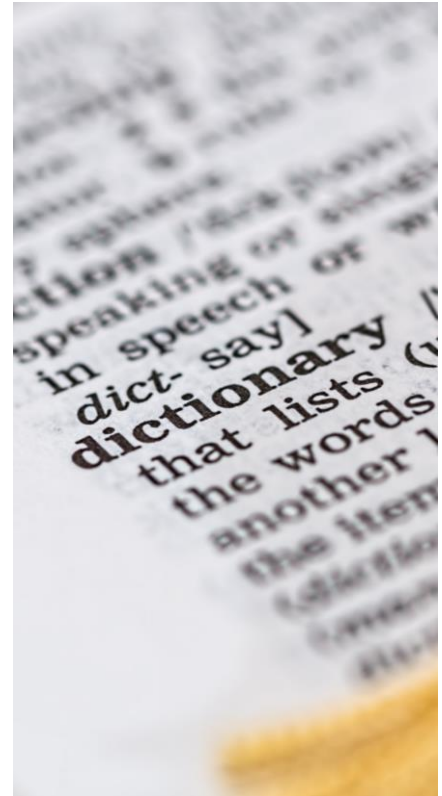
Students completing the A Level in English Language & Literature have gone on to study many related subjects such as English, Linguistics, Law and Drama at University. The qualification is a broad based platform which can lead to many careers such as Teaching, Law and Journalism.

Subject Entry Requirements:

Students are expected to have gained a Grade 6 in GCSE English Language and a Grade 5 in English Literature.

How is this assessed?

- ✓ Exams
- ✓ Coursework
- ✗ Other



Exam Board

Edexcel

FRENCH

A LEVEL

Course Content

A-level French is an exciting and thought-provoking course. It not only equips students with the ability to communicate in French but also fosters transferable skills including critical thinking and creativity.

In addition, it develops an understanding of French culture and society and the influence of the past on present-day French speaking countries. Topics which are covered include: The Changing Face of the Family, the Digital World, Patrimony, Music and Cinema, Strikes, Immigration, the Diverse Society, and the Political System.

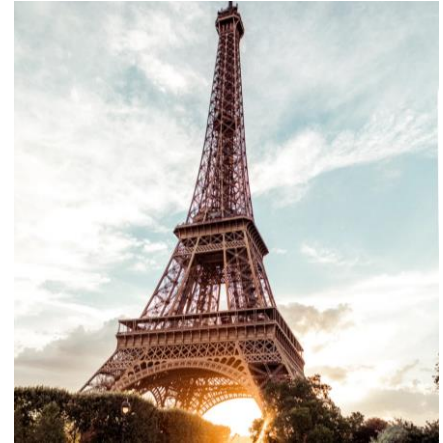
Participation in discussions and debates, on a range of topics, is a key element of the course, as well as taking part in a wide range of interactive learning experiences. Students also read and study "No et Moi" and complete a film analysis of the film "Au revoir les enfants!" The speaking exam at the end of the course also offers students the opportunity to complete an independent research project on a topic of their own choice related to French speaking countries.

This is excellent preparation for university-based tasks There is also an opportunity for all students to participate in a work experience placement in St. Étienne in order to improve confidence and fluency with spoken French.

Further studies and career opportunities:

Students completing the A Level in French have gone on to study French or Linguistics at university. Students are also able to study French alongside many other subjects such as Business, Maths, Engineering.

French offers many varied career routes, as being able to speak French is seen as a highly attractive skill by future employers.



Subject Entry Requirements:

Students are expected to have gained a Grade 6 in GCSE French.

How is this assessed?

- ✓ Exams
- × Coursework
- × Other

Exam Board

AQA

GEOGRAPHY

A LEVEL

Course Content

This course explores why the world in which we live is likely to change more in the next 50 years than it has ever done before, and helps to prepare students for those changes. The transferable skills which Geography fosters are an asset in the complex world of employment today. Geography is about the future and encourages lifelong learning. Topics covered at A Level are from Physical Geography and Human Geography: including the water and carbon cycles through studying rivers, tropical rain forests; the coastal system and hazards including volcanoes, earthquakes, fires and storms. Human Geography includes aspects of global systems and governance, globalisation and the emergence of global agencies such as the United Nations.

Students must complete two days of field research each year. This will have cost implications.

Further studies and career opportunities:

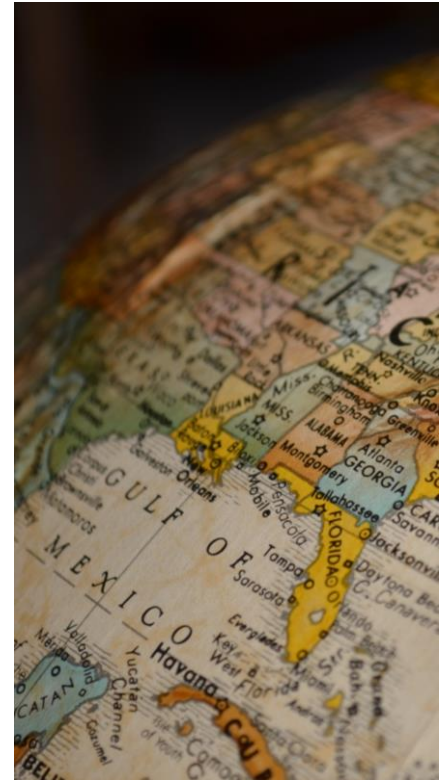
Students completing the A Level in Geography have gone on to careers in related areas, such as: management and administration, further training, including PGCE for teaching, the financial sector, the retail sector, other professions, including the media.

Subject Entry Requirements:

Students are expected to have achieved the standard entry requirements for A level including a Grade 5 in GCSE Geography.

How is this assessed?

- ✓ Exams
- ✓ Coursework
- ✗ Other



Exam Board

AQA

GERMAN

A LEVEL

Course Content

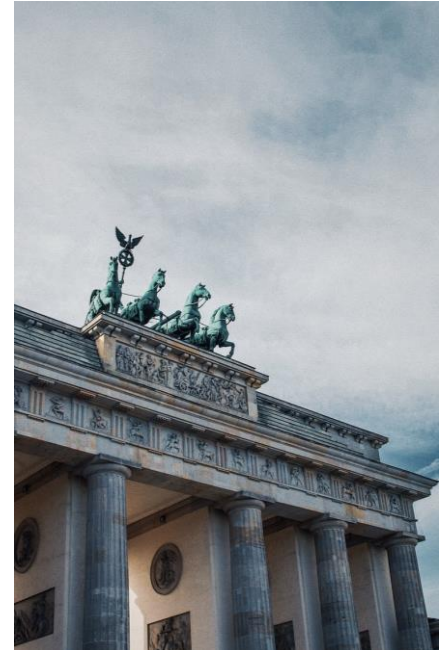
A Level German is an exciting and thought-provoking course. It not only equips students with the ability to communicate in German but also fosters transferable skills including critical thinking and creativity. In addition, the course develops an understanding of German culture and society and students explore the influence of the past on present-day German speaking countries. Topics which are covered include: Youth Culture, the Digital World, Art and Architecture, Festivals and Traditions, Immigration, Racism, the Political System, Reunification and Berlin. Participation in discussions and debates, on a range of topics, is a key element of the course, as well as taking part in a wide range of interactive learning experiences. Students also read and study "Der Vorleser" and complete a film analysis of the film "Goodbye Lenin!" The speaking exam also offers students the opportunity to complete an independent research project on a topic of their own choice related to German speaking countries. This is excellent preparation for university-based tasks.

Further studies and career opportunities:

Students completing the A Level in German have gone on to study German or Linguistics at university. Students are also able to study German alongside many other subjects such as Business, Maths, Engineering, Law and many more. Being able to speak more than one language opens up a huge range of career opportunities. A recent survey by the CBI revealed that German is the most sought-after foreign language by UK employers.

Subject Entry Requirements:

Students are expected to have gained a Grade 6 in GCSE German.



How is this assessed?

- ✓ Exams
- ✗ Coursework
- ✗ Other

Exam Board

AQA

GRAPHICS

A LEVEL

Course Content

During this 2 year course students will engage in creating ideas for physical, and or conceptual design outcomes that are personal and original. Students will be guided through the course by the class teacher, but will have a great sense of independence when shaping and developing their visual portfolio. Students will be able to express their own ideas and in many forms using many combinations of process, material, technique and media, and will work with digital media and learn how to produce all work in Photoshop.

Students will develop skills of critical analysis and interpretation of their own outcomes and the work of others. The aim is to develop a very high standard of practical ability and confidence in talking about core concepts and elements of the visual arts, which will lead to direct entry onto degree courses in the visual arts and related disciplines. Students will have many opportunities to see art and design from first hand experiences and meet with artists on trips to galleries around the world. Students will develop a portfolio that will be suitable for interview at University or employment.

Further studies and career opportunities:

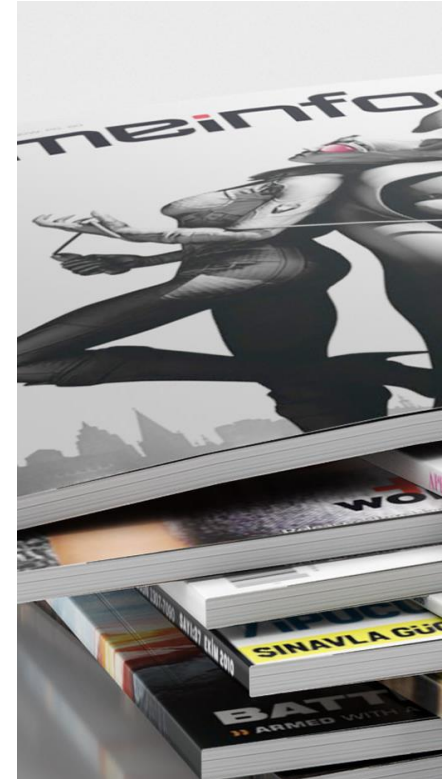
There are numerous career routes in the field of the visual arts. We prepare students to study Fine Art, Illustration, Graphic Design, Fashion, Fashion Marketing, Architecture and all design courses.

Subject Entry Requirements:

Students are expected to have achieved the standard requirements for A level.

How is this assessed?

- ✓ Exams
- ✓ Coursework
- ✗ Other



Exam Board

Eduqas

HEALTH & SOCIAL CARE

BTEC

Course Content

This course aims to allow students to develop an understanding and awareness of the key concepts within the Health and Social Care Sectors. By examining and evaluating current best practice, as well as developing your knowledge of the anatomy and physiology of the human body, this course will best prepare you for further study or employment within the sector. The course offers students the opportunity to gain a pass, merit or distinction in both the units and examinations, which is then combined to give an overall outcome.

BTEC National Extended Certificate in Health and Social Care: This course offers a broad basis of study for the Health and Social Care sector. It is equivalent in size to one A Level. There are four units of study of which two are externally marked (units 1 and 2). Topics include Human Lifespan Development, Working in Health and Social Care, Meeting the Needs of Service Users and Psychological Disorders and their care. External assessment accounts for 58% of the overall outcome of the course. Students will also be encouraged to undertake an organised work placement, which they have organised themselves to enable them to be able to apply their learning within a real-life situation.

Further studies and career opportunities:

BTEC National Health and Social Care Extended Certificate, when taken alongside other qualifications, will allow you to gain the UCAS points to apply to university and will especially benefit you if you choose to follow a career pathway in a public facing role. The modules have been chosen carefully to ensure that they meet the diverse settings within the Health and Social Care sector to ensure that students are able to have the knowledge and skills they need to work within the sector of their choice, or to continue onto higher education on a course of their choosing. This could include applying for a place on a degree course, an apprenticeship in an area of Health and Social Care, or employment within the sector. The courses overall give a high level of specialist subject knowledge, but offer a flexible approach to future prospects, which support students to carve out a career pathway of their choice.

Subject Entry Requirements:

Students are expected to have achieved the standard requirements for BTEC.

How is this assessed?

- ✓ Exams
- ✓ Coursework
- ✗ Other

PLEASE NOTE that the BTEC Level 3 qualification landscape is changing and undergoing major reform. What this means for us is that the BTEC offer could change for September 2025 as we await further government updates.

Exam Board

Pearson

HISTORY

A LEVEL

Course Content

The key components of this course cover a study two externally examined topics and one internally assessed Historical Investigation.

One topic students will study is The USA, 1865-1975. This option provides for the breadth study of USA from the end of its Civil War to the Superpower it had become by 1975. It encourages students to reflect on the political, economic and social changes that took place throughout the century and will help students to understand issues surrounding the relationship between the USA and the rest of the world today. Students will learn about domestic developments in the period like post-Civil War reconstruction, the Jazz Age, prohibition, the rise and fall of the KKK, the Great Depression, and the Civil Rights Movement. They will also study the USA's involvement in international affairs such as World War's One and Two, the Cold War and the Vietnam War.

The second topic of study is Britain between 1906 and 1957. This option allows students to study political, economic and social change during the era when modern Britain was formed. They will investigate the impact of World War's One and Two on British society, the significance of political figures such as David Lloyd George and Winston Churchill, the extension of the franchise and votes for women, and developments in post war Britain such as the creation of the NHS plus New Commonwealth migration and race relations. In addition, students will also be required to complete a 3,500-word personal study in Year 13, based on a topic of their choice from the Tudor period. This should take the form of a question in the context of approximately 100 years.

Students are required to engage with a range of historical interpretations, including social, economic, religious and cultural perspectives, developing their source analysis and skills and concepts of historiography.

Further studies and career opportunities:

Students completing the A Level in History have gone on to study History at undergraduate level and beyond. Students also use their History A Level as a base to go on to study subjects such as law, media, international relations, and teaching at university. There are so many transferable skills that employers in business, government, law and education are often keen to recruit them.

Subject Entry Requirements:

Students are expected to have achieved the standard entry requirements for A level including a Grade 5 in GCSE History.

How is this assessed?

- ✓ Exams
- ✓ Coursework
- ✗ Other

Exam Board

AQA

LAW

A LEVEL

NEW!
September
2024

Course Content

Studying Law gives students an understanding of the role of Law in today's society and raises their awareness of the rights and responsibilities of individuals. A Level in Law fosters students' interest in law and helps them develop knowledge and skills relevant to further study of law and other subjects. Students will develop their knowledge of the law in England, and the interaction between law, morals, justice and society. It works well in combination with A Level Politics to compliment an understanding of the way in which law is made and the way in which the judiciary operates in England.

There are 4 topics of study. Students will study: the legal system and the nature of law; criminal law; the law of tort; and the law in relation to Human Rights. Students will learn to apply their legal knowledge in these areas to scenario-based situations.

By learning about legal rules and how and why they apply to real life, students also develop their analytical ability, decision making, critical thinking and problem-solving skills. All these skills are highly sought after by higher education and employers.

Further studies and career opportunities:

A-Level law is a great place to begin perusing a career in law. A-Level law helps you to understand the fundamentals of the law, and it can give you an insight into the different types of legal roles available and the skills required to become a successful lawyer. When paired with studying A Level History and/or Politics it can lead to careers and further study in business, government, media and international relations.

Subject Entry Requirements:

Students are expected to have achieved a minimum of a grade 6 in History or English to study A Level Law.

How is this assessed?

- ✓ Exams
- ✓ Coursework
- ✗ Other



Exam Board

OCR

MATHEMATICS

A LEVEL

Course Content

Two-thirds of this course is based on Pure Mathematics, which is the study of Algebra and Functions, including the familiar topics of Sequences and Trigonometry, as well as introducing and exploring Calculus and Logarithms. These topics combine to develop skills which include problem solving, logic and analysing situations. Focus is also given to improving basic numeracy skills and the creativity needed to solve mathematical problems.

The other third of the course focuses on Applied Mathematics, which makes use of mathematic skills to solve problems in Mechanics and Statistics.

Further studies and career opportunities:

Students completing the A Level in Mathematics have gone on to careers in a wide range of fields, including: Engineering, Business, Finance, Science and Technology. This subject is vital for accessing degree courses in Mathematics, Physics and Engineering. It is also a useful support for many university courses particularly those in: Chemistry, Biology, Computing, Economics and Social Sciences.

Subject Entry Requirements:

Students are expected to have gained a Grade 7 in GCSE Mathematics.

How is this assessed?

- ✓ Exams
- ✗ Coursework
- ✗ Other



Exam Board

Edexcel

MATHEMATICS & FURTHER MATHEMATICS

A LEVEL

Course Content

This course is a combination of the Mathematics and Further Mathematics A-levels. The content of the Mathematics A-level is taught to enable progression into some very interesting and challenging areas of Mathematics.

Two-thirds of the Mathematics course is Pure Mathematics, with the remaining third split evenly between Mechanics and Statistics.

Fifty per cent of the Further Mathematics course is Pure Mathematics, allowing for the study of the applied modules of Further Mechanics and Decision Mathematics.

In Year 12, new topics are introduced, such as Matrices and Complex Numbers, which are vital in many STEM degrees. In addition to this, students will study Decision Mathematics, which includes linear programming and algorithms. In Year 13, students will specialise in Mechanics and continue their development of Pure Mathematics.

Further studies and career opportunities:

Students completing this A Level, have gone on to careers in Engineering, Finance and Mathematics. Two recent students have gone to study Mathematics at top American universities.

This subject is especially useful for those considering taking any Science or Engineering subject at a top university. Students wishing to apply for Universities requiring further qualifications such as STEP will be given plenty of help and support. We frequently have multiple students needing to sit these examinations.

Subject Entry Requirements:

Students are expected to have gained a grade 8 in GCSE Mathematics.

How is this assessed?

- ✓ Exams
- ✗ Coursework
- ✗ Other

Exam Board

Edexcel

MEDIA STUDIES

A LEVEL

Course Content

This course provides students with the opportunity to develop the critical tools necessary to carry out their own readings of the mass media. Students will build upon their own interests, knowledge and enjoyment of media technologies. Throughout the course, theory is combined with practice as students develop the production and editing skills needed to create original and effective media texts.

In this A Level, students will acquire and apply a theoretical framework for the critical analysis of media texts through the Theoretical Framework of Language, Audience, Representation and Industry. Students will study a range of set texts from both history and modern day, and apply a variety of theories including: Semiotics, Narratology, Structuralism, Postcolonialism, Regulation and many more. Students will apply these concepts through examining texts covering cultural, historical and social significance. This framework will then be demonstrated through practical coursework, where students are given the opportunity to respond to a brief and create a professional and original media product.

Further studies and career opportunities:

Students have gone on to varied careers, including Journalism and Media Production.

Subject Entry Requirements:

Students are expected to have achieved the standard entry requirements for A level.

How is this assessed?

- ✓ Exams
- ✓ Coursework
- ✗ Other



Exam Board

Eduqas

MUSIC

A LEVEL

Course Content

The successful study of Music requires a whole range of skills and students are encouraged to embrace different ways of thinking about music. Three key areas await the would-be A Level musician: performance (35%), composition (25%) and listening & appraising (40%). It is the student's responsibility that they receive weekly lessons from a good instrumental or vocal teacher. Pupils will prepare for a 10 minute recital at the end of the course (35%). Students will compose two compositions, one free and the other in response to a brief. (25%). Students complete an in-depth study of set works from a range of genres, including The Operas of Mozart, Piano Music of Chopin, Brahms and Grieg, Stevie Wonder, Daft Punk, Beyonce, Hanz Zimmer and Bernard Hermann. Other components include aural awareness, melodic dictation, chord recognition and music analysis.

Further studies and career opportunities:

Students completing the A Level in Music have gone on to study a wide range of careers, including: Engineering, Maths, Physics, English and Law. Those specifically interested in musical careers, have taken opportunities in Drama, Films, Journalism, Administration, Publishing, Librarianship, Radio & Television, Recording Technology, The Services and Speech & Music Therapy. Other careers include: Performing, Teaching, Composing, Arranging and Editing.

Subject Entry Requirements:

Pupils are expected to have achieved a grade 6 in GCSE Music and will have passed or be around Grade 5 in music theory. Performance is 30% of the course and pupils need to be equivalent to Grade 5 or higher on their principle study (instrument or voice).

How is this assessed?

- ✓ Exams
- ✓ Coursework
- ✓ Other



Exam Board

AQA

MUSIC TECHNOLOGY

A LEVEL

Course Content

The successful study of Music Technology requires a wide range of skills and students are encouraged to embrace different ways of thinking about music.

Our A level in Music Technology course has the following structure:

- Studio recording techniques – The capture, mix and master of audio in a studio environment.
- Music technology based composition – Combining audio, sequencing, sampling and many other techniques to create an innovative and original composition.
- Listening and analysing examination – Technology focused exam questions and questions relating to the history of music technology – from the jukebox to high-tech modern studio recording and everything in between.
- Producing and analysing examination – The practical application of the many sound engineering and production techniques learnt throughout your time on the course.

The course also teaches many transferable skills necessary to be successful in the complex world of further education and employment.

All coursework and exams are assessed externally by the exam boards Pearson.

Further studies and career opportunities:

Students can go on to study a music technology degree and some institutes of further education accept this as a qualification to study a music degree. It is also possible to go directly into the music/music technology industry. Career opportunities include producer, studio engineer, live engineer, artist, music supervisor, composer of music for TV or film, teacher, music therapist or music for special needs.



Subject Entry Requirements:

Students are expected to have achieved the standard entry requirements for A level.

How is this assessed?

- ✓ Exams
- ✓ Coursework
- ✗ Other

Exam Board

Pearson

PERFORMING ARTS

BTEC

Course Content

The BTEC Level 3 National Extended Certificate in Performing Arts is the equivalent of one A Level and attracts the same amount of UCAS points as a single A Level.

The course offers a great deal of choice to specialise in areas of the performing arts that our students express interest in and passion for. Those areas are: acting, dance, musical theatre, physical theatre and variety performance.

The course engages students in practical approaches to the performing arts from the outset, using explorative techniques to build performance skills, the context of the chosen art form and to learn the practical approaches of established directors, performers and companies.

The course is split into four units. One of which challenges students to investigate and analyse the work and achievements of established performing arts practitioners from across the disciplines. This unit is assessed through written coursework conducted in controlled conditions.

The other three units engage students in practical, skills building sessions working towards performance. Students will participate in three performances across the two years, document the process and evaluate the outcomes through written coursework and audio/visual presentations, such as vlogs.

Students will have the opportunity to participate in workshops led by professional performers, directors and companies as part of the course.

Subject Entry Requirements:

Grade 6 in either GCSE Drama, GCSE Dance or GCSE English. Or, equivalent achievement in BTEC Level 2 Performing Arts.

Further studies and career opportunities:

Students completing Performing Arts courses go on to careers in a wide range of fields, including creative and performance-based industries in TV, media, theatre and film. Our students have also pursued careers in education, law, marketing, sales, and even medical professions.

How is this assessed?

- ✗ Exams
- ✓ Coursework
- ✓ Other

PLEASE NOTE that the BTEC Level 3 qualification landscape is changing and undergoing major reform. What this means for us is that the BTEC offer could change for September 2025 as we await further government updates.

Exam Board

Edexcel



PHOTOGRAPHY

A LEVEL

Course Content

During this 2 year course students will engage in creating artwork using a camera/camera phone. During this time you will develop a set of visual personal annotated responses to your chosen themes and your work targets will be negotiated with your course teachers. Your learning outcomes will be presented in A2 size portfolios. You will be taught how to utilise new digital media, mainly Photoshop, to enhance your photographic practice and allow it to be seen by a global audience. The contextual emphasis for the course will be endemic and your work will be critiqued weekly in individual tutorials. Your contextual evidence base will take the form of annotated entries in your portfolio as your work develops, you will review, critique and evaluate all outcomes on every page of your folder work. You will analyse and interpret the work of artists, photographers, designers, and or crafts persons, from Western and non-Western cultures. You will learn how to understand and make stimulating visual responses to the work of others in the form of personal visual outcomes. You will develop a personal portfolio of work by using a range of techniques, materials and a variety of media that will be suitable for interview at University or employment.

Further studies and career opportunities:

There are numerous career routes in the field of the visual arts. We prepare students to study Photography, Journalism, Media, Fashion, Fashion Marketing, and all courses for which creativity is a necessary skill. This course also complements the Fine Art course.

Subject Entry Requirements:

Students are expected to have achieved the standard entry requirements for A Level.

How is this assessed?

- ✓ Exams
- ✓ Coursework
- ✗ Other



Exam Board

Eduqas

PHILOSOPHY, ETHICS & RELIGION

A LEVEL

Course Content

The world urgently needs people who are good at thinking about religion. Religion makes a difference to the world. It makes a difference to politics, to society, to families, to education, to culture and to economics. The influence and importance of Philosophy, Ethics and Religion has never been greater. Religion is too important and too powerful to be left to the large number of people who don't think about it. We invite you to become one of the people to think about Philosophy, Ethics and Religion. Philosophy, Ethics and Christianity provides a critical approach to the consideration of moral and philosophical issues.

Philosophy asks big questions about the nature of reality questions such as: 'Why is there suffering in the world?' and 'Is there any evidence that God exists?' Students study both ancient and modern philosophers to help explore these questions. Ethics is the study of morality and looks at what is the right and wrong way to act. We relate ethical theories, both secular and religious, to real life issues within Euthanasia, Business and Sexual Ethics.

This course would suit students who have an interest in current affairs, enjoy listening to different points of view and thinking deeply about life. The Eduqas Philosophy, Ethics and Religion specification is divided into three equal components:

- The Study of Religion (Christianity) - Religious Figures and Sacred Texts (Jesus), Religious Concepts (such as the nature of God), Religious Life (including faith communities) and Religious Practices (such as baptism and festivals)
- Philosophy of Religion - Inductive Arguments for the Existence of God (including the cosmological and teleological), Deductive Arguments for the Existence of God (including ontological), The Problem of Evil and Suffering, Religious Experience and Religious Language.
- Religion and Ethics - Ethical thought (Divine Command Theory, Ethical Egoism and Virtue Ethics), Situation Ethics (including application to homosexual and polyamorous relationships), Utilitarianism (including application to animal experimentation and nuclear weaponry) and Natural Law (including application to abortion and voluntary euthanasia.)

Further studies and career opportunities:

Every year there are opportunities to attend online lectures/conferences on key areas of the A Level specification as well as ideas that develop students' thinking beyond the syllabus. At A Level, Philosophy, Ethics and Religion works equally well with art, humanities, and science-based subjects; it is ideal if you want to become a doctor or lawyer, if you want to go into journalism, business or finance, artificial Intelligence or into any profession which involves pitching ideas, marketing and working with culture and people. Through this A Level you will learn to build and interrogate arguments and how to question and evaluate narratives. This critical skill can be found in every profession and vocation so studying at this level will be invaluable in every form of employment.

Further studies and career opportunities:

Three written examinations. Each paper is 2 hours and worth 33⅓% of qualification.

Component 1: A Study of Religion (Christianity) (2 hour exam, 33⅓% of A Level)

Component 2: Philosophy of Religion (2 hour exam, 33⅓% of A Level)

Component 3: Ethics (2 hour exam, 33⅓% of A Level)

Subject Entry Requirements:

Students are expected to have achieved the standard entry requirements for A Level including a Grade 5 in GCSE RE.

How is this assessed?

- ✓ Exams
- ✗ Coursework
- ✗ Other

Exam Board

Eduqas



PHYSICAL EDUCATION

A LEVEL

Course Content

The A level subject content sets out the knowledge, understanding and skills common to all AS and A level specifications in physical education to ensure progression from key stage 4 and the possibility of development on to further study. The new A-level PE is 70% theory and 30% non-exam assessment (practical) with students assessed in the role of player/performer or coach.

Students will also be able to focus their skills as they will only be assessed in one activity.

This will require them to:

- understand how physiological and psychological states affect performance
- understand the key socio-cultural factors that influence people's involvement in physical activity and sport
- understand the role of technology in physical activity and sport
- develop their ability to analyse and evaluate to improve performance
- understand the contribution which physical activity makes to health and fitness

The topics are:

- applied anatomy and exercise physiology
- biomechanical movement
- skill acquisition
- sport psychology
- sport and society
- the role of technology in physical activity and sport.

Further studies and career opportunities:

Studying PE at A Level can be a useful 'stepping stone' towards a variety of career options in the sporting sector. This could be in the leisure industry, teaching, physiotherapy, coaching, sports psychology, sports journalism and sports medicine, to name but a few. However, due to its diversity and well respected theoretical foundations, there are many different career paths that the course can lead on to - not just sport related!

Subject Entry Requirements:

You will need to achieve a Grade 6 in GCSE PE or a Grade 6 in Biology. In addition you need to play at least one sport at club level outside of school.

How is this assessed?

- ✓ Exams
- ✓ Coursework
- ✗ Other

Exam Board

Edexcel

PHYSICS

A LEVEL

Course Content

This course allows students to study the universe, attempting to describe its complexity and beauty in the simplest possible terms. Students will have the opportunity to study a range of theories, from the centuries-old work of Newton to cutting-edge developments in the Standard Model of Particle Physics. This course allows students to develop their complex reasoning skills, to apply mathematical tools to a variety of contexts and to hone their ability to communicate concepts clearly and logically.

Students will learn to use their mathematical skills to model physical phenomena, going beyond simple qualitative explanations of a situation to accurately predict what will happen. The scientific method relies on experimental analysis of theories and so students will undertake a significant number of key experiments alongside their theoretical studies, discovering for themselves, among other things, how electrical circuits, moving objects and magnetic fields can be explained.

Further studies and career opportunities:

Students completing the A Level in Physics have gone on to careers in a wide range of fields, including: Medicine, Mathematics, Accountancy, Architecture and Law. A Level Physics is a key entry requirement to Physics and Engineering degree courses.

Subject Entry Requirements:

Students are expected to have gained a grade 6 in GCSE Mathematics and grade 7 in GCSE Combined Science Trilogy or GCSE Physics.

How is this assessed?

- ✓ Exams
- ✗ Coursework
- ✓ Other



Exam Board

AQA

POLITICS

A LEVEL

Course Content

The course covers three broad areas; the government and politics of the UK, the government and politics of the USA, and political ideas. Students will complete an in depth study of UK and US government and politics. Across both the UK and US systems students will become familiar with the individuals and organisations that take decisions, political parties and their beliefs, pressure groups and their role, political elections and campaigns, and how civil rights are protected.

The aim is to help students understand the similarities and differences between both countries, coming to their own conclusions about how these systems shape the way people live their lives, and questioning how effectively the systems promote democracy and the protection of civil rights in practice. Students will learn about both historic and contemporary examples of both political systems in action, and will keep up with current affairs to supplement their understanding.

As such, what students learn is often a reflection of issues, events and debates that are taking place during their period of studying the subject. These could be current issues before Parliament/Congress, elections that might be taking place and the issues being discussed in campaigns, debates sparked by both traditional and social media, or campaigns run by pressure groups.

The study of political Ideas covers a range of ideologies from feminism to ecologism and explores key debates surrounding each ideology. The three key topics allow for students to display a synoptic and holistic understanding of the subject of Politics. Students are required to engage with a range of political interpretations, including social, economic, religious and cultural perspectives, developing evaluative and analytical skills. Students will need to show relevant knowledge of news and current affairs from the UK and US to support their learning, as well as being encouraged to investigate and develop their own views on political issues.

Subject Entry Requirements:

Students are expected to have achieved the standard entry criteria for A level.



Further studies and career opportunities:

Students completing the A Level in Politics have gone on to study Law, Politics, History, Sociology, Ethics, PPE, Advertising or Journalism at university.

How is this assessed?

- ✓ Exams
- ✗ Coursework
- ✗ Other

Exam Board

AQA

PRODUCT DESIGN

A LEVEL

Course Content

This creative and thought-provoking qualification gives students the practical skills, theoretical knowledge and confidence to succeed in a number of careers, especially those in the creative and engineering industries.

Through both theory and practical tasks students will develop their capacity to think creatively, innovatively and critically, allowing them to explore design opportunities arising from the needs, wants and values of users and clients. Students will investigate historical, social, cultural, environmental and economic influences on design and technology whilst enjoying opportunities to put their learning in to practice by producing products of their choice.

Overall this course will give students an opportunity to gain a real understanding of what it means to be a designer, alongside the knowledge and skills sought by higher education and employers.

Further studies and career opportunities:

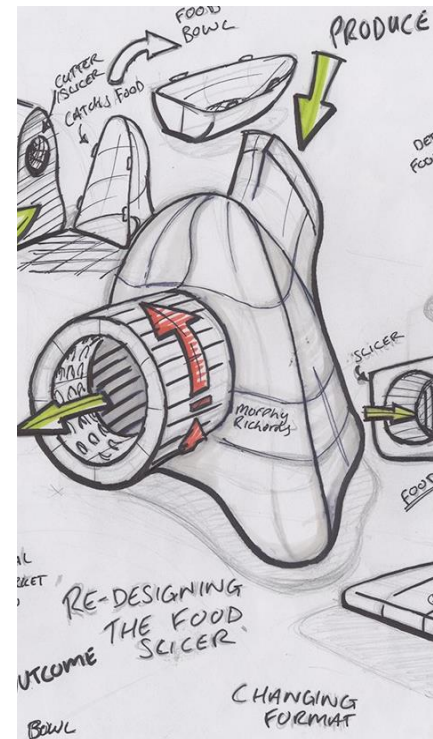
Students completing the A Level in Product Design have gone on to careers in: Product Design, Industrial Design, Mechanical Engineering, Design Engineering and Civil Engineering. Some students have gone on to a wide range of successful higher level apprenticeships at Jaguar Land Rover and Peugeot.

Subject Entry Requirements:

Students are expected to have gained a GCSE Grade 6 in a Design Technology subject, or a 6 in Art.

How is this assessed?

- ✓ Exams
- ✓ Coursework
- ✗ Other



Exam Board

AQA

PSYCHOLOGY

A LEVEL

Course Content

This course provides students with a good understanding of the various research methods and approaches used in Psychology to explain the human mind and behaviour. The course is designed to develop critical thinking skills and prepare students for higher level study. Students are encouraged to think about and question some of the fundamental issues in Psychology, such as why people are obedient even if they know the outcome will be harmful to others.

As part of the course, students will need to enjoy the challenge of learning new ways of thinking about behaviour, and applying this knowledge to key areas in Psychology, including: gender development, memory and forensic psychology. Throughout the course, a range of teaching and learning methods are used including group work, independent study and class discussions.

Further studies and career opportunities:

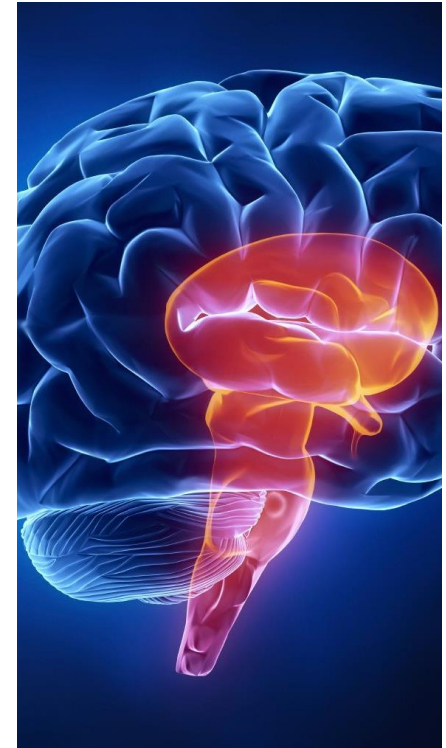
Many students completing the A level in psychology go on to study psychology at university. The A level course provides knowledge relevant to many career routes within psychology including clinical psychology, forensic psychology and educational psychology.

Subject Entry Requirements:

Students are expected to have a Grade 6 in English Language or Literature, and a Grade 6 in Biology.

How is this assessed?

- ✓ Exams
- ✗ Coursework
- ✗ Other



Exam Board

AQA

SOCIOLOGY

A LEVEL

Course Content

The course has a strong focus on contemporary UK society, examining its place in a global context. Students study the nature of sociological thought, including concepts such as: social order; social control; social change; conflict; and consensus. They also learn methods of sociological inquiry, including: research techniques; practical and ethical issues in collecting data.

In Year 12, study includes the compulsory topics of Education with Methods in Context and Families and Households with Research Methods.

In Year 13, students explore the compulsory topic of Crime and Deviance. Students also study beliefs in society and will be expected to show more range and depth of knowledge and understanding than Year 12 students, together with more highly developed skills in analysis, interpretation and evaluation.

Further studies and career opportunities:

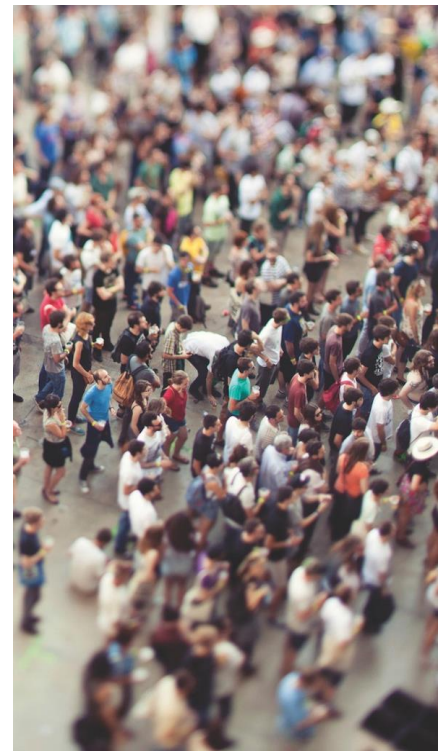
Students completing the A Level in Sociology have gone on to continue their studies at university. Students have pursued careers in journalism, politics, public relations, business, or public administration, fields that involve investigative skills and working with diverse groups.

Subject Entry Requirements:

Students are expected to have achieved the standard entry requirements for A level.

How is this assessed?

- ✓ Exams
- ✗ Coursework
- ✗ Other



Exam Board

AQA

SPORT

BTEC LEVEL 3 NATIONAL EXTENDED CERTIFICATE IN SPORT

BTEC LEVEL 3 NATIONAL DIPLOMA IN SPORT

How is the subject usually Examined?

The courses consists of a variety of study methods and assessments, coaching sessions, practical assessments, oral assessments written assignments and exams.

Exam Paper 1	31524H Unit 1: Anatomy and Physiology 90 Minutes
Exam Paper 2	31525H Unit 2: Fitness Training and Programming for Health, Sport and Wellbeing, Synoptic exam which includes 4 hours preparation time. Exam duration is 2hours 30minutes
Internal assessment 1	Unit 3: Professional Development in the Sports Industry, 60 guided learning hours (NEA)
Internal assessment 2	Unit 4: Sports Leadership, 60 guided learning hours (NEA)

Subject Entry Requirements:

Students are expected to have achieved the standard entry requirement for BTEC.

How is the subject usually Examined?

External assessment Unit 1	Anatomy and Physiology
External assessment Unit 2	Fitness Training and Programming for health, Sport and Well-being
External assessment Unit 22	Investigating Business in Sport and the Active Leisure Industry
Internal assessment Unit 3	Professional Development in the Sports Industry
Internal assessment Unit 4	Sports Leadership
Internal assessment Unit 5	Application of Fitness Testing
Internal assessment Unit 6	Sports Psychology
Internal assessment Unit 7	Practical Sports Performance
Internal assessment Unit 23	Skill Acquisition in Sport

Subject Entry Requirements:

Students are expected to have achieved the standard entry requirement for BTEC.

PLEASE NOTE that the BTEC Level 3 qualification landscape is changing and undergoing major reform. What this means for us is that the BTEC offer could change for September 2025 as we await further government updates.

TEXTILES

A LEVEL

Course Content

During this 2-year course students will engage in a creative and thought-provoking course using a range of textile media to create a range of practical outcomes. During this time, you will develop a set of visual and personal annotated responses to your chosen themes, you will receive weekly individual tutorials to discuss the direction of your work. Your work will be presented in an A3 sketch book as well as A2 presentation boards, and will be a combination of your own imagery, observational studies, contextual studies of existing artist/designers work in order to inspire your own work. Your contextual evidence base will take the form of annotated entries in your portfolio as your work develops, you will review, critique and evaluate all outcomes in every page of your folder work as well as produce a 1000+ word contextual study in relation to this work. You will analyse and interpret the work of artists, fashion designers, costume designers and or crafts persons, from Western and non-Western cultures. You will learn how to understand and make stimulating visual responses to the work of others in the form of personal visual outcomes or fashion/costume designs

Further studies and career opportunities:

Students completing the A Level Art and Design - Textiles have gone on to careers in a wide range of fields, including textile or fashion design, interior design, fashion merchandising and buying, costume and theatre design, print design, fabric construction, advertising, marketing profession and the manufacturing industry and all courses for which creativity is a necessary skill. This course also complements the Fine Art, Photography and Product Design courses.

Subject Entry Requirements:

Students are expected to have gained a grade 5 in Art and Design Textiles, Fine Art, Photography or Design Technology.

How is this assessed?

- ✓ Exams
- ✓ Coursework
- × Other



Exam Board

Eduqas

ASTON UNIVERSITY
UNIVERSITY OF HERTFORDSHIRE
QUEEN MARY UNIVERSITY OF LONDON
MANCHESTER METROPOLITAN UNIVERSITY

UNIVERSITY OF LEICESTER
UNIVERSITY OF SHEFFIELD
UNIVERSITY OF BIRMINGHAM
UNIVERSITY OF LIVERPOOL
UNIVERSITY OF LINCOLN
LIVERPOOL HOPE UNIVERSITY
UNIVERSITY OF WOLVERHAMPTON
TEESSIDE UNIVERSITY, MIDDLESBROUGH
UNIVERSITY COLLEGE LONDON
HARPER ADAMS UNIVERSITY
UNIVERSITY OF GREENWICH
COVENTRY UNIVERSITY
UNIVERSITY OF ESSEX
UNIVERSITY OF SUSSEX
UNIVERSITY OF SOUTHAMPTON
CARDIFF UNIVERSITY
BIRMINGHAM CITY UNIVERSITY
UNIVERSITY OF OXFORD
EDGE HILL UNIVERSITY

UNIVERSITY OF THE ARTS LONDON
BIRMINGHAM CITY UNIVERSITY
UNIVERSITY OF SURREY
DE MONTFORT UNIVERSITY
UNIVERSITY OF READING
NEWCASTLE UNIVERSITY
UNIVERSITY OF CAMBRIDGE
UNIVERSITY OF THE WEST OF ENGLAND
PLYMOUTH MARJON UNIVERSITY
UNIVERSITY OF BATH
UNIVERSITY OF CHESTER
UNIVERSITY OF MANCHESTER
UNIVERSITY OF WARWICK
UNIVERSITY OF NOTTINGHAM
UNIVERSITY OF SALFORD
THE UNIVERSITY OF LAW
KINGSTON UNIVERSITY
GLASGOW SCHOOL OF ART

UNIVERSITY OF HULL
UNIVERSITY OF Huddersfield
UNIVERSITY OF NORTHAMPTON
CARDIFF METROPOLITAN UNIVERSITY
NOTTINGHAM TRENT UNIVERSITY
LIVERPOOL JOHN MOORES UNIVERSITY
UNIVERSITY OF NOTTINGHAM
UNIVERSITY OF WARWICK
UNIVERSITY OF NOTTINGHAM
UNIVERSITY OF MANCHESTER
UNIVERSITY OF BATH
UNIVERSITY OF CHESTER
UNIVERSITY OF MANCHESTER
UNIVERSITY OF WARWICK
UNIVERSITY OF NOTTINGHAM
UNIVERSITY OF SALFORD
THE UNIVERSITY OF LAW
KINGSTON UNIVERSITY
GLASGOW SCHOOL OF ART

"Sixth-form students receive an outstanding education. They follow ambitious programmes of study. Students aim high and successfully achieve exciting destinations when they leave school. Students value the many opportunities they have to develop their leadership skills."

OFSTED 2023

All information stated is correct at time of printing and subject to change.
Please visit our website for the latest news and information.

FURTHER INFORMATION



02476 223 542



schooloffice@bluecoatschool.com



www.bluecoatschool.com



@BlueCoatCofE



Blue Coat Church of England School & Music College
Terry Road
Coventry
CV1 2BA



Inspire Education Trust
Together we achieve, individually we grow