

# Y12 Mock Exam Dates



Date	AM Exams (9:00 am)	PM Exams (1:30 pm)
Tue 17 June	Maths P1 Pure (2hrs)	–
Wed 18 June	Biology P1 (1h30), Sociology P1 (1h15), Further Maths P1 (1h40)	History P1 USA (2h30)
Thu 19 June	Eng Lit P1 Poetry (1h15), Business Studies P1 & P2 (2hrs), Physics P1 (1h30)	Psychology (2hrs)
Fri 20 June	Chemistry P1 (Inorganic, 1h30), Economics P1 & P2 (2hrs), RE (P1&P2) (2hrs) Prod Design Technical Principles (2hrs)	–
Mon 23 June	Computing P1 & P2 (2h30), Politics P1 (UK, 2hrs), Media Studies P1 (2h15)	Physics P2 (1h30), Eng Lit P2 & P3 (2hrs)
Tue 24 June	Maths P2 Applied (1h15)	–
Wed 25 June	Sociology P2 (2hrs), Further Maths P3 (1h30), German P1 (1h45), Spanish P1 (1h45)	Geography P1 & P2 (2h30), Music (1h30)
Thu 26 June	History P2 Britain (2h30)	–
Fri 27 June	Chemistry P2 (Organic, 1h30), Music Tech P3 (1h30) Y12 RE P3 (1hr)	German P2 Writing & Translation (1h30)



**Blue Coat**

Church of England School  
& Music College

**Project 826 – Session 1**

UCAS MOCKS



## Logistics

1. Slides will be emailed to you on Arbor tomorrow morning
2. Fire evacuation to the cross outside of reception if the Bell rings



## Agenda

1. Exam Rules
2. Exams Do's & Don'ts
3. UCAS updates
4. Practical Tips Before the Exam Day



**Blue Coat**

Church of England School  
& Music College

# Welcome Mock Exam & UCAS Evening

Miss Davoile



## Notices

- Check your **timetable**
- Check your **venue, seat, row number** well **in advance** in your exam
- It will also be emailed and on **Arbor**
- **Photograph your timetable** on your phone and save as your screen saver
- Enter through the **changing room** if in the Sports Hall
- If you need to check the **board outside the Sports Hall** please do this well before the start time – you will not be able to do this on the way in



**Blue Coat**

Church of England School  
& Music College

# Mocks, Examinations & AI

Mrs D Kershaw

# KEY DATES



- UCAS Mock Exams Start Tuesday 17<sup>th</sup> June 2025 for two weeks



# WHEN - Mocks



Line up times:

- **Morning exams (9:00 AM):** Students should attend tutor time for registration and then proceed to the exam venue.
- **Afternoon exams (1:30 PM):** Students should line up by 1:10 PM.
- You must be ready with bag packed, pen and equipment in hand
- You will not be able to do this in the bag drop area
- **SILENT BAG DROP AS YOU WALK THROUGH YOU WILL NOT BE ABLE TO STOP**

9am

1.30pm

# MISSED EXAM?



- You **MUST** sit the exams when scheduled
- You **CANNOT** sit it at a different time
- If you are sick – try to come in and sit the paper, we have plans in place to keep people isolated if they are have sickness etc.

# EXAM RULES



Go to the toilet before the exam start  
Before tutor and lunchtime  
Do not try to use them on the way in and do  
not waste your exam time



# EXAM RULES



For all mock exams you **MUST** have the following: **BLACK PEN, PENCIL, RUBBER AND RULER.** **CALCULATOR WHEN ALLOWED**



# EXAM RULES



**BLACK BIRO PENS ONLY**



# EXAM RULES



Calculators **MUST** be free of lids



# EXAM RULES



Candidate cards will be on desks with student photos on.

**DO NOT** WRITE, DRAW OR FOLD THEM, AS THEY HAVE TO BE USED AGAIN.

A 3D illustration of a white rectangular card being folded in half, with a vertical crease down the center. The text 'Don't fold' is superimposed over the card.

**Don't fold**

# EXAM RULES



You must **NOT TALK** to, attempt to **COMMUNICATE** with or **DISTURB** other candidates once you have entered the examination room.





# EXAM RULES



No **verbal** or **none verbal** communication.

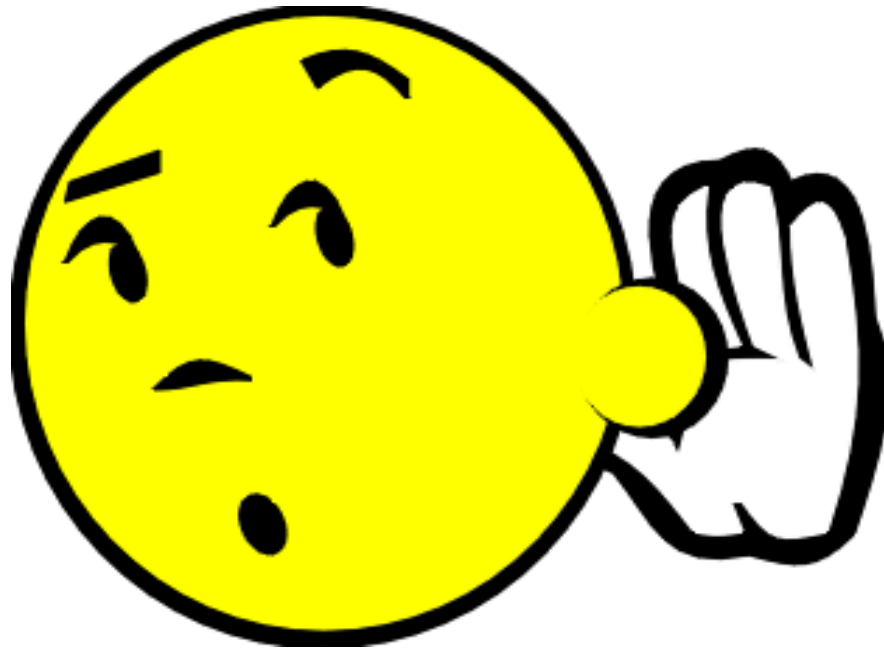
Facial expressions, smiling, hand movements  
etc.



# EXAM RULES



You **MUST** follow the instructions of the  
invigilation team



# EXAM RULES



You **MUST** not sit an examination in the name of another candidate



# EXAM RULES



You **MUST** not be involved in any unfair or dishonest practice in any part of the exam.



# EXAM RULES



Mobile Phones **MUST** be switched off and in the **PHONE CABINETS** provided



**Do not use  
mobile phones**

If you have a phone on you - even if you do not intend to use it you will be reported to the board meaning a Penalty or Disqualification

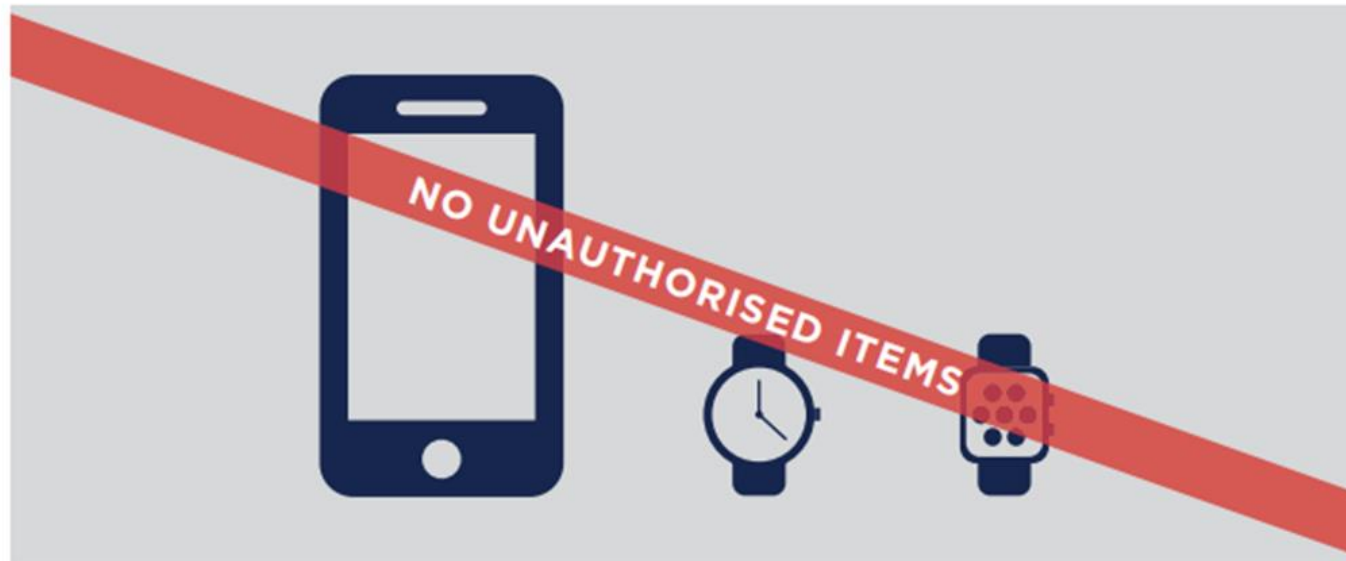


Do **NOT**

phones or

# NO MOBILE PHONES NO WATCHES

NO POTENTIAL TECHNOLOGICAL/WEB  
ENABLED SOURCES OF INFORMATION



If you have  
received

will be

Possession of unauthorised items, such as a mobile phone  
or any watch, is a serious offence and could result in

# DISQUALIFICATION

from your examination and your overall qualification.

# EXAM RULES



Pupils with hair coverings or any headwear have to be checked for wireless headphones.

Please enter lifting your hair back to show your ears to the invigilator





# EXAM RULES



All water bottles **MUST** have the label removed.  
Refillable are fine but must be clear and have no writing on them.

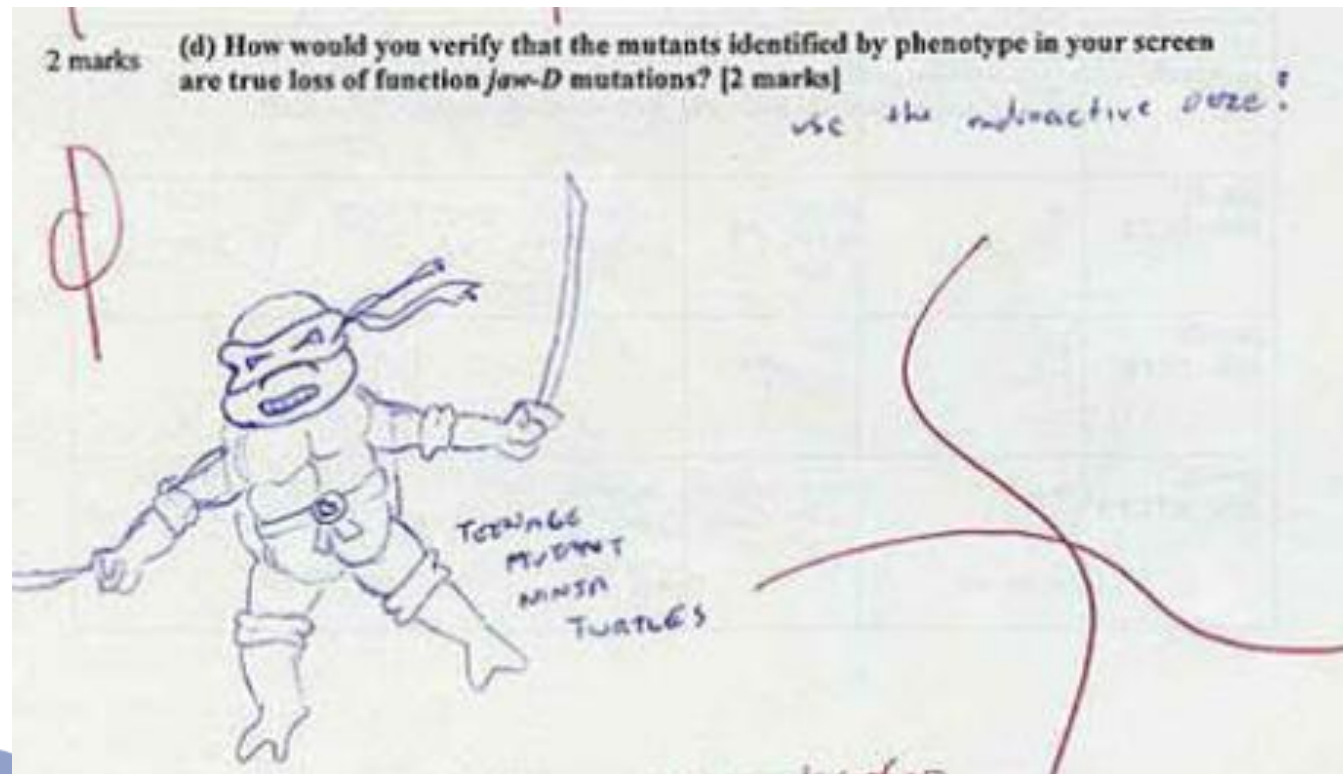




# EXAM RULES



You **MUST NOT** doodle on the exam paper. You may be disqualified if you put anything that is offensive.



# EXAM RULES



If confused or in need to support during the exam raise your hand and speak to the exam invigilators



# EXAM RULES



If you breach the rules we **DO NOT** decide what is referred to the board.

**ANY** and **ALL** breaches must be refereed,

You are risking **Disqualification** from your unit, paper or whole qualification.

# Access Arrangements



- Use your arrangements (e.g., extra time, reading pens, word processors) during mocks to avoid losing them.
- Practice with these tools in preparation for summer exams.
- Sign a document to confirm your arrangements.
- Coloured paper users: Trial coloured glasses in small rooms during mocks.
- Questions? Contact Mr Tomlinson, Mrs. Jobson & Mrs. Earl (in the Hub).



# Joint Council for Qualifications

## On the day of your exam

**Before sitting your exams, ensure:**

- ☐ You know the date, time and location of your exams – you might find it helpful to write this information in a calendar or planner
- ☐ You know who to contact at school in case there's an emergency that makes you late or unable to sit your exam

**What you cannot take into the exam:**

- ☐ Any type of phone
- ☐ Revision notes
- ☐ Any type of watch (this includes analogue, digital and smart watches)



**What you will need:**

- ☐ A clear pencil case
- ☐ At least two black ink pens – blue pens are not accepted
- ☐ An approved calculator for relevant exams
- ☐ Appropriate apparatus such as a ruler or protractor for relevant exams
- ☐ A clear water bottle if you wish to take one in – it is important it does not have a label on



**Other important information:**

- ☐ Listen carefully to the invigilator's instructions which will be specific to your exam. If you are unsure of anything, please raise your hand and wait for the invigilator
- ☐ Fill in your details on the front of your exam paper
- ☐ If you need additional answer sheets, please raise your hand and wait for an invigilator who will provide you with one. Remember to add your details to this booklet as well
- ☐ If you need to use the toilet or feel unwell, please raise your hand and wait for an invigilator who will escort you from the examination room if possible
- ☐ Make sure you stay silent – talking to a fellow student could result in disqualification from all your exams

If you have any questions about the format on the day, please ask your teacher or exams officer.





# HINTS & TIPS



- Read every question carefully
- Don't rush page one – especially 1 mark answers
- Don't leave anything blank - some marks are better than no marks
- Look at the marks per questions
- Pace yourself well – keep an eye on the time
- Check, check and check again if you have time spare

# Good Luck!



The exams office is in  
Bardsley Corridor –

Mrs Jobson behind  
Reception

Mr Dorrington is opposite  
Reprographics.

**1**

You **must** be on time for all your examinations.

**2**

**Possession of a mobile phone** or other unauthorised material **is not allowed** even if you do not intend to use it. You will be subject to penalty and possible disqualification from the exam/qualification.

**3**

You **must not** talk to, attempt to communicate with or disturb other candidates once you have entered the examination room.

**4**

You **must** follow the instructions of the invigilator.

**5**

You **must not** sit an examination in the name of another candidate.

**6**

You **must not** become involved in any unfair or dishonest practice in any part of the examination.

**7**

If you are confused about anything, only speak to an invigilator.



# AI and Assessments:

## **A quick guide for students**

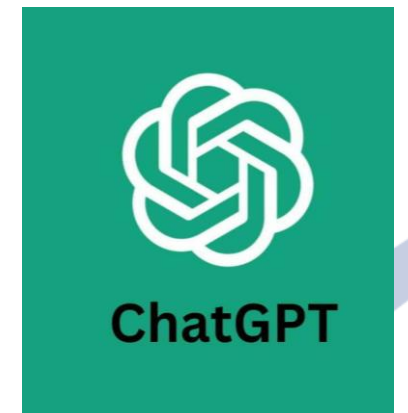




# What is AI?



- AI stands for artificial intelligence and using it is like having a computer that thinks
- AI tools like ChatGPT or Snapchat My AI can write text, make art and create music by learning from data from the internet, but watch out – they can also make things up and be biased



# How can AI be misused in assessments?



AI misuse is when you take something made using AI and say it's your own work.

This is malpractice and its very likely that you will be disqualified.



**THIS IS  
CHEATING!**

# How do I make sure I don't misuse AI?



- 1 Know the rules
- 2 Reference reference reference!
- 3 Declare it's all your own work



# 1

## Know the rules!



- You're not allowed to use AI tools when you're in an exam
- Your teachers will tell you if you're allowed to use AI tools when doing your coursework – the rules will depend on your qualification
- Even if you're allowed to use AI tools, you can't get marks for content just produced by AI – your marks come from showing your own understanding and producing your own work
- For **Media** e.g. We are aware that AI is built into programmes such as Photoshop. Candidates are permitted to use these programmes to manipulate and edit their original images to remove unwanted elements; however, learners are not permitted to use Photoshop or any other software to generate content using a text prompt to add to their original images.



## 2

## Reference reference reference!



If you're allowed to use AI tools, you must reference them clearly

- Name the AI tool you used
- Add the date you generated the content
- Explain how you used it & give a web link to the source
- Save a screenshot of the questions you asked and the answers you got





## Declare it's all your own work



- When you hand in your assessment, you have to sign a declaration
- Anything without a reference must be all your own work
- If you've used an AI tool, don't sign the declaration until you're sure you've added all the references



## What happens if I misuse AI?



If you've misused AI, you could lose your marks for the assessment – you could even be disqualified from the subject.

**DON'T RISK IT!**  
**Don't throw away 2**  
**years work!**





# **REMEMBER**

**Misusing AI is cheating!**

Know the rules

Talk to your teachers

Reference clearly



# NEA & AI



- You can use but you **MUST** reference and not make out its your own work – you have signed a declaration
- Advise you DON'T RISK IT
- Detection software will be used when we suspect it has been used
- It has given is 100% identification where AI has been used
- Board take a 0 tolerance for the none referenced use of AI and you could be sanctioned by the exam board – potential loss of the qualifications



<https://bluecoatschool.com/curriculum/examinations/>



**Blue Coat**  
Church of England School  
& Music College



**Inspire Education Trust**  
Together we achieve, individually we grow

Weduc

Parentpay



[ABOUT US](#)

[ADMISSIONS](#)

[CURRICULUM](#)

[STUDENTS](#)

[PARENTS](#)

[WORSHIP](#)

[SIXTH FORM](#)

[VACANCIES](#)

[CONTACT](#)



## Examinations

[Blue Coat School](#) > [Curriculum](#) > Examinations

This area provides all the information that you will need to help you be prepared for the GCSE/GCE exams at Blue Coat School.

### In This Section

[Curriculum Overview](#)

[Curriculum Structure](#)

[Subjects](#)

[Careers Guidance \(CEIAG\)](#)



**Blue Coat**

Church of England School  
& Music College

# The importance of predicted grades

Mr Faulkner



# The importance of predicted grades – Mr Faulkner

[Importance of Year 12: predicted grades \(5 mins\) video with captions | Resources | Net Sixth Form](#)

# UCAS Mocks and Predicted Grades



- You need to prepare fully for the mocks as they will help inform UCAS predicted grades.
- Predicted grades are what will go on your UCAS application and be one factor universities use for making decisions.
- Predicted grades need to be realistic to ensure that you stand the best possible chance of continuing to University
- **Predicted Grades:**
  - UCAS mocks will be used to inform UCAS predicted grades.
  - Other factors taken into account: ATL, data says students only improve by half grade, how close you were to a grade boundary.
  - Mock results will be received end of summer term. UCAS predicted grades in September.

# Key Dates



UCAS mocks: w/b 16<sup>th</sup> + 23<sup>rd</sup> June

Application deadline conservatoire music: Blue Coat 15<sup>th</sup> Sep  
(UCAS 2<sup>nd</sup> Oct)

Early Entry Application deadline: Blue Coat 30<sup>th</sup> Sep (UCAS 15<sup>th</sup> Oct)

General Application deadline: Blue Coat 5<sup>th</sup> Dec (UCAS 14<sup>th</sup> Jan)

# Support



**UCAS Drop Down Day:** Thursday 10<sup>th</sup> July to start the application process

**Bulletin/Emails:** independent opportunities for taster lectures, open days, work experience to enhance personal statements

**Autumn term 2026:** tutors will help with personal statements

**Websites:** UCAS (searching for courses, how write personal statement and much more), university websites

**Independent Research/Effort:** entry requirements (inc voluntary/work experience), specific modules, university open days.

# Personal Statements



From 2026 a **scaffolded** structure to support students. Three sections to help students persuade an admissions tutor that they know about the course, are prepared for the course and for university life.

Question 1: Why do you want to study this course or subject?

Question 2: How have your qualifications and studies helped you to prepare for this course or subject?

Question 3: What else have you done to prepare outside of education, and why are these experiences useful?

**Student initiative:** super-curricular, experiences that fit with entry requirements/criteria

**Summer term/Summer:** good opportunity to develop skills/experiences that aid applications and work on personal statement





### 3 Practical Tips Before the Exam Day- Building up to exams

1. Early bird catches the...bus
2. Have spares... and spares of spares
3. Relax – stressing won't help anybody



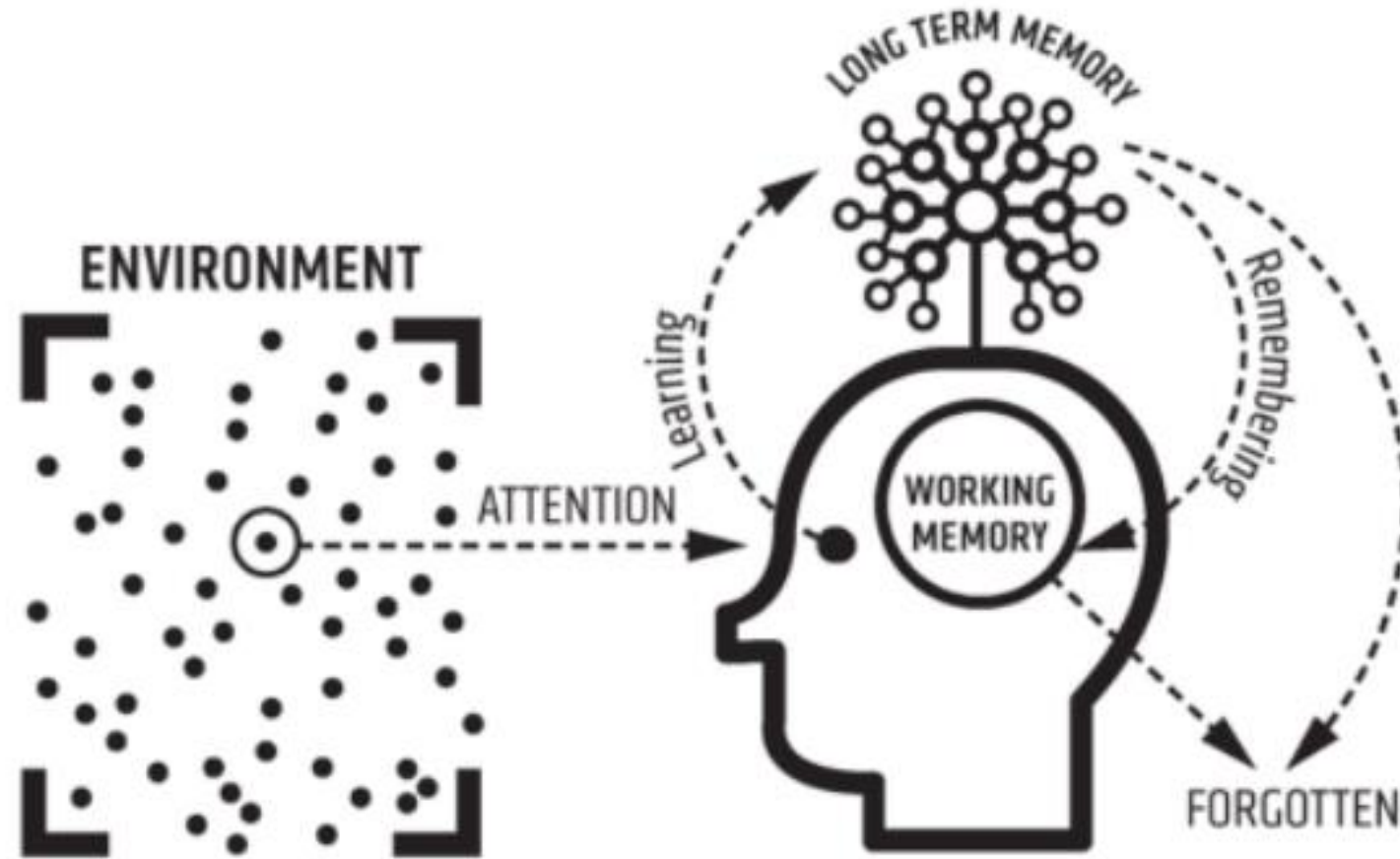
**Blue Coat**  
Church of England School  
& Music College

# Practical learning tips for students and parents

**Miss Preece**

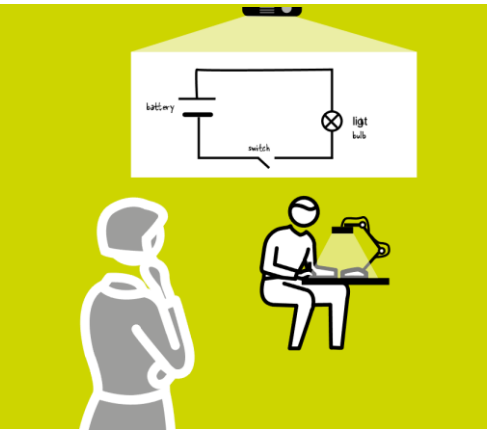
May 2025

# How we learn

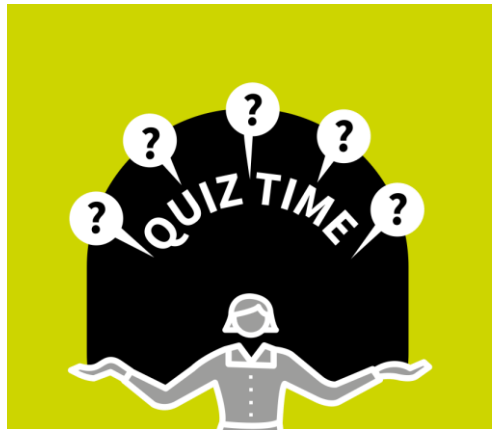


# A REPERTOIRE OF RETRIEVAL ROUTINES

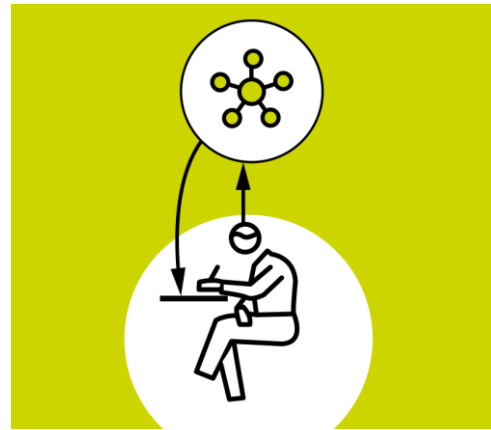
1 2 3 4 5



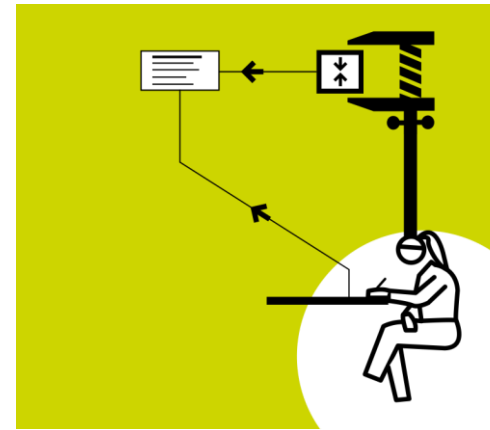
SHOW ME



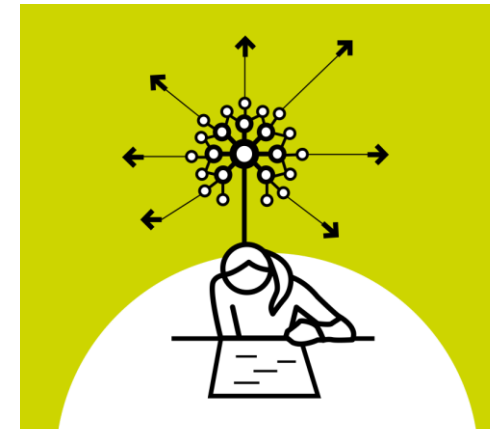
QUIZ



MAP IT



SUMMARISE



ELABORATE



- Establish a repertoire of effective retrieval practice strategies, so students' knowledge is deepened but also flexible rather than rigid, as they reinforce their schema in different ways.
- It's useful for students to know the routines around any specific strategy, so they can be used spontaneously without additional reinforcement.
- Each strategy needs a defined content focus and students should have resources to allow them to self-check and improve through further study.



# Strategies

- Self Quizzing
- Practice Explaining
- Summarising
- Flashcards
- Mapping
- Brain Dumps
- Exam Questions & Practice

# Self-Quizzing

## Why:

- Enhanced Memory Retention
- Identification of Knowledge Gaps
- Improved Exam Performance
- Increased Cognitive Effort

## How:

- Gather or generate quiz questions
- Answer the questions unaided
- Check answers
- Identify areas for restudy.
- Test again. Repeat

# Practice Explaining

## Why:

- To explain something you have to pull together all the relevant knowledge, put it in the correct sequence and connect it up so that it makes sense to yourself and others!
- This strengthens connections and helps to identify areas of weakness.

## How:

- Study the material
- Run through explanations with prompts
- Run through explanations without prompts
- Reviews success: check for accuracy
- Repeat the explanation, adding detail.

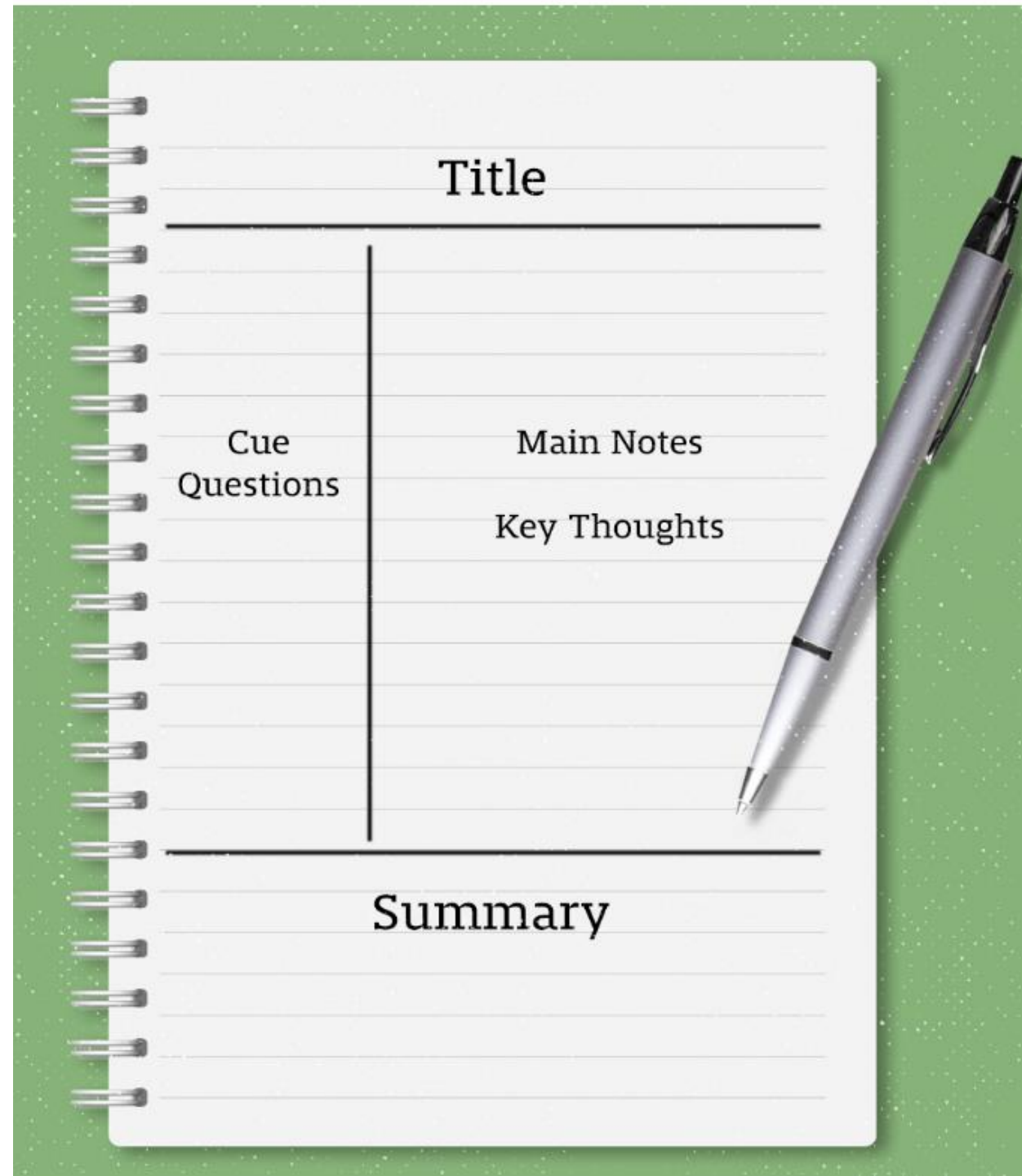
# Summarising

## Why:

Filtering and Reducing down learning to memorable chunks to support knowledge consolidation.

## How:

**Cornell Method:** Note taking that is focused on chunking learning, summarising and analysing key enquiries

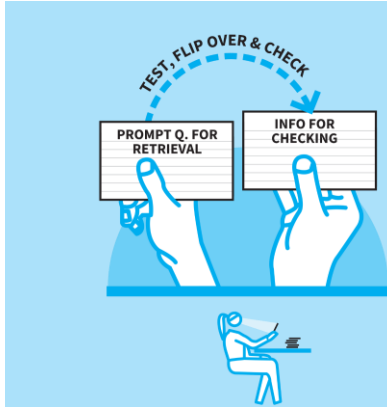


# Flash Cards

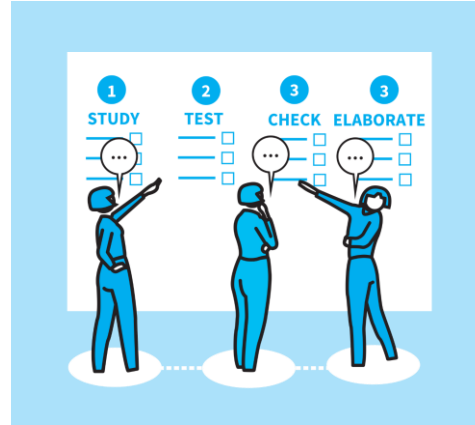


To be, or not to be, that is the question:  
Whether 'tis nobler in the mind to suffer  
The slings and arrows of outrageous fortune,  
Or to take arms against a sea of troubles  
And by opposing end them.

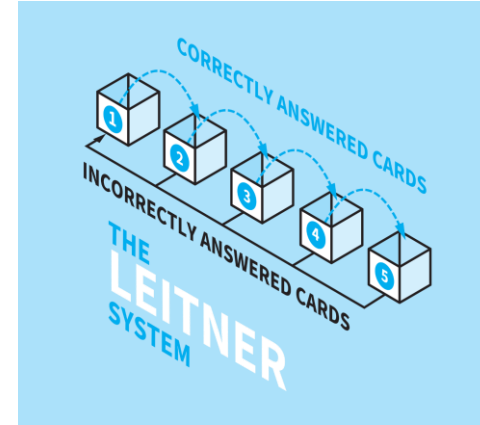
ESTABLISH QUIZZABLE  
KNOWLEDGE ELEMENTS



CREATE TWO-SIDED FLASH  
CARDS



ESTABLISH THE CHECKING  
PROCESS



BUILD FLUENCY THROUGH  
REPETITION



VARY THE CARDS AND CHECKS

## Why:

Increasing the spacing slightly each time the information is correctly recalled is the most effective way to ensure that the information enters long term memory – students are testing themselves just before they forget it.

This works on building mental models – adding more knowledge and reducing cognitive load.



# Brain Dumps

## Why:

- As we mentally scan our schema, we might activate knowledge connected in a range of ways.
- The free flow of a brain dump can help flush out a more expansive set of ideas.

## How:

- Select a topic & related prompt.
- Write down any key concepts.
- Organise and connect ideas
- Check for accuracy & gaps
- Extend depth & range.

# Mapping



## Why:

- Our mental models often have a spatial element to them.
- We can capture these on paper with word diagrams: lists, tables, flow charts etc.
- They help to organize ideas and remember.

## How:

- Organize ideas
- Categorize & compare
- Sequence & timeline
- Hierarchies & branching trees
- Recreate & check for accuracy.




# Productivity: Getting things done

- Have a timetable
- Space learning – don't cram it
- Focus and don't multitask – think about where revision is taking place
- Bitesize & track triumphs
- Make it a habit, repeat the habit
- Set goals and take breaks
- Rewards



# Timetabling: Fitting it all in

## How to do your first Pomodoro:

- 
- 1 Get into an optimal work space without distractions.
  - 2 Choose ONE task to focus on.
  - 3 Set your timer for 25 minutes.
  - 4 Do your work.
  - 5 STOP when the timer ends.
  - 6 Take a 5-minute break.
  - 7 Repeat 3 times.
  - 8 Take a longer break (30 minutes).



# Don't put off the hard stuff

## How To Eat The Frog



### 1. Identify Your Frog

Find your hardest task of the day or the task that scares you the most.

### 2. Eat It

Don't procrastinate any further. Eat the frog! a.k.a. do your most important task first thing in the morning.

### 3. Repeat Every Day

Stick with it! You'll be amazed by how this method lets you accomplish impactful work.

# Presidential management: What to do & when

## The Eisenhower Decision Matrix





# Remember

- You do not need to be a superhero.
- There are times when we all need help– it is ok to ask for help.
- Don't forget to celebrate all the things you do well. Make a 'Bravo' list

# Reading List



## Reading List

[Blue Coat School](#) > Reading List

To support your studies and help you deepen your subject knowledge, we've put together tailored reading lists for each subject offered at Blue Coat Sixth Form. These lists include recommended books, articles, and wider reading materials that will enrich your understanding and prepare you for success both in class and beyond.

Click on the buttons below to access the reading list for each subject.

<a href="#">Biology</a>	<a href="#">Business</a>
<a href="#">Chemistry</a>	<a href="#">Computing</a>
<a href="#">Economics</a>	<a href="#">English Literature</a>
<a href="#">Geography</a>	<a href="#">German</a>
<a href="#">Health and Social Care</a>	<a href="#">History</a>
<a href="#">Maths</a>	<a href="#">Media</a>
<a href="#">Physics</a>	<a href="#">Psychology</a>
<a href="#">RE</a>	<a href="#">Sociology</a>



**Blue Coat**  
Church of England School  
& Music College

**Thank you**  
Good Luck